

APPENDIX C.1

Statement of Significance



Connaught School (2013)

Description of Historic Place

Connaught School is a two-storey brick structure in the heart of Regina's Cathedral Village neighbourhood at the corner of Elphinstone and 13th Avenue. Also on the site is a round auditorium design by Clifford Wiens Architect in the 1960s.

Heritage Value

The heritage value of Connaught School lies in its connection with the development of education in Regina, its architect, and its architectural style.

There is value in the connection of the building with the development of education in Regina. Built in 1912, it is the oldest public school in Regina still being used for its original purpose. It is a pioneer in community schooling and dual track French-English education, for many years it was the only dual track community track school in Canada. The school was named in honour of His Royal Highness the Duke of Connaught, who was the Governor of Canada from 1911-1916. The French Immersion Program at Connaught started in 1975 and in 1980 the school was designated as a Community School.

There is also value in the identity of the architect. James Henry Puntin (1878-1957) made an important contribution to architecture in Regina yet his work is often underrated and overlooked. Born at Gateshead-on-Tyne, England on 3 May 1878 he was educated at school in Gateshead, at Rutherford College, Newcastle-on-Tyne, and at Owens College in Manchester. He apprenticed to Charles Kempson, Gateshead, 1891-95 and worked as

assistant to F.R.N. Haswell of North Shields in 1896-99, then joined the Royal Engineers Civil Staff as draftsman and clerk-of-works. He emigrated to Canada in 1904 and settled in Winnipeg where he assisted J.G.H. Russell in 1904-05 and became manager of the Winnipeg office of Darling & Pearson in 1905-06. Puntin moved to Regina in late 1906 and worked as supervising architect for the Saskatchewan Public Works Dept. overseeing construction of important buildings such as the provincial Legislative Buildings in Regina, designed by E. & W.S. Maxwell. He accepted the appointment of Architect to the Regina Public School Board in 1912 and designed many substantial school buildings in Regina during the next twenty years, but it was his assured designs for major additions to Regina College (1914) and the new complex for Luther College (1925) which demonstrated his ability to use Collegiate Gothic forms in a distinctive manner. In 1929 he formed a partnership with Col. F.J. O'Leary and the following year invited Charles Coxwell to join their firm, but a dearth of work during the Depression led to the dissolution of the firm and Puntin continued under his own name until 1943 when he retired and moved to British Columbia. He died in Vancouver on 20 March 1957.

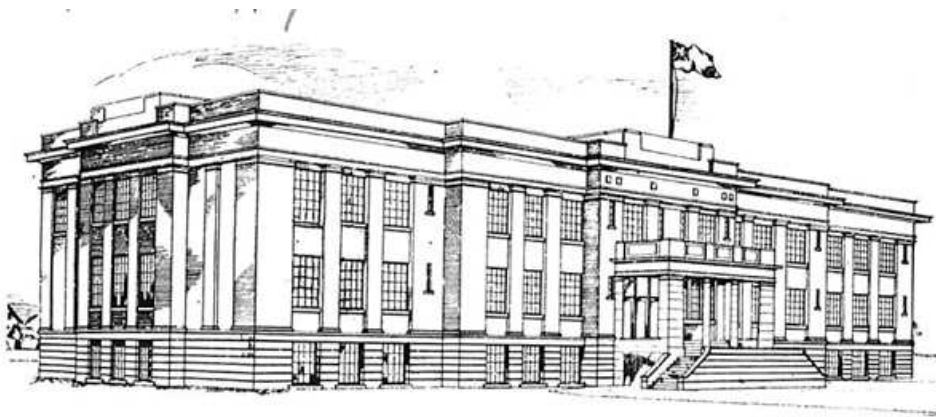
There is value in the architectural styling of the school. An architectural style was chosen that was devoid of ecclesiastical reference. The building expressed the local fervor of the time against any religious component in public education, and as such became a kind of prototype. The architect based his design on those developed for the London School Board in England. With vernacular red brick and applied decoration, it contrasted sharply with the Gothic buildings normally used for places of learning. The style of this building manifests the ideal elements of a school from that time period: practicality, economy and beauty.

The 102-year-old Connaught School is also of social value to the community. It has a key role in providing open space and a community hub, in addition to its contribution to the neighbourhood's historic character as demonstrated by its architectural harmony with the surrounding neighbourhood.

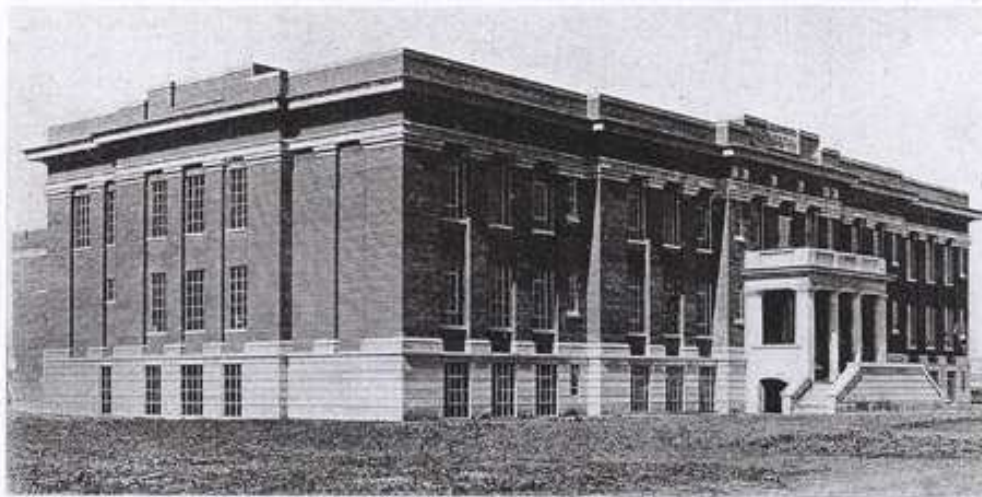
Character-Defining Elements:

The heritage character of Connaught School is defined by the following elements:

- stone base
- masonry walls with applied pilasters
- stone column capitals and bases
- double staircase on front façade
- entrance doors on front and rear
- pattern of fenestration
- relationship between main school and gymnasium
- brick chimney at rear
- name plate on front of building
- setting in landscape
- roundels on frieze above main entrance
- connection with history of education in Regina
- connection with architect James Henry Puntin



The Connaught School, Regina. Architect, Mr. J. H. Puntin; contractors, Parsons Building Company, Limited
Drawing in 'The Contract Record and Engineering Review' October 23, 1912



Connaught School, Regina

J. H. PUNTIN, Architect



Connaught School soon after its completion. Source: Saskatchewan Archives Board RA1877