

EASTBROOK**PHASE 3A****PLAN SHOWING
PROPOSED SUBDIVISION**

OF PART OF

SE1/4 SEC 14, TWP 17, RGE 19, W2 Mer

REGINA, SASKATCHEWAN

SCALE 1 : 1000

NOTE:

- Measurements are in metres and decimals thereof.
- Some measurements are approximate and may differ from the final Plan of Survey by as much as 1.0 %.
- Area to be approved is outlined by a bold dashed line and contains 1.11 ha (2.75 ac).
- Corner cutoffs are 4.5 metres.
- Lot widths of irregular shaped lots are shown as 7.86 and are at 6 or 18 metre setbacks.



March 7/2016

Date

Saskatchewan Land Surveyor

CITY OF REGINA APPROVAL

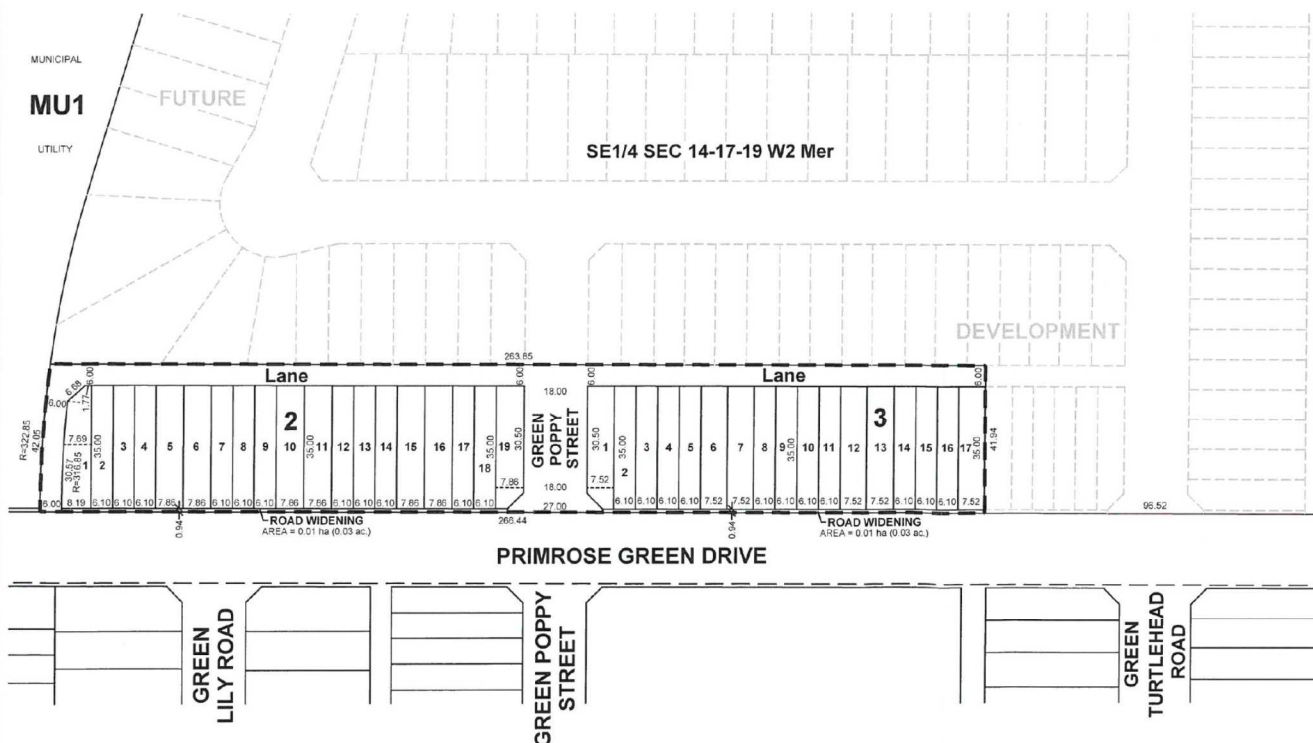
The subdivision proposed herein outlined in bold is approved under the provisions of Bylaw No. 7748-LA-B84 of The City of Regina.

Dated this _____ day of _____ A.D. 20 ____

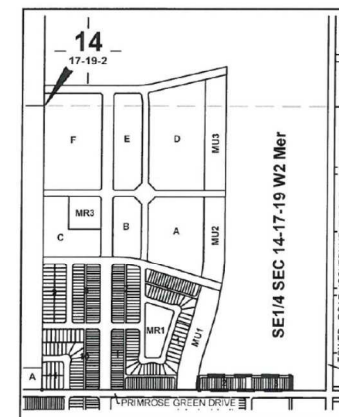
CITY CLERK

OWNER - DEVELOPER:

DREAM TOWNS LANDS SOUTH (GP) INC.



Vice President Regina Land



REDUCED DRAWING
*** NOT TO SCALE ***

FILE NO. RC-0181-15-PPS PH3A - 030316

DRAWN BY: NA CALCD BY: SC

DRAWN BY: SC

