

APPENDIX C

TRAFFIC BYLAW WORKING GROUP – ARCOLA AVENUE SPEED LIMITS

Section(s): PART III - Speed Limits, Section 10(1)(a)

Purpose: To reduce speed limits on Arcola Avenue.

Existing:

| Description | From | To | Limit (km/h) |
|---------------|--------------------------------|--------------------------------|--------------|
| Arcola Avenue | 50 m. East of Victoria Avenue | Hwy #1 Entrance Ramp | 60 |
| Arcola Avenue | Hwy #1 Entrance Ramp | 150 m. East of Chuka Boulevard | 70 |
| Arcola Avenue | 150 m. east of Chuka Boulevard | East City Limit | 80 |

Proposed:

Remove:

| Description | From | To | Limit (km/h) |
|---------------|--------------------------------|--------------------------------|--------------|
| Arcola Avenue | 50 m. East of Victoria Avenue | Hwy #1 Entrance Ramp | 60 |
| Arcola Avenue | Hwy #1 Entrance Ramp | 150 m. East of Chuka Boulevard | 70 |
| Arcola Avenue | 150 m. east of Chuka Boulevard | East City Limit | 80 |

Replace:

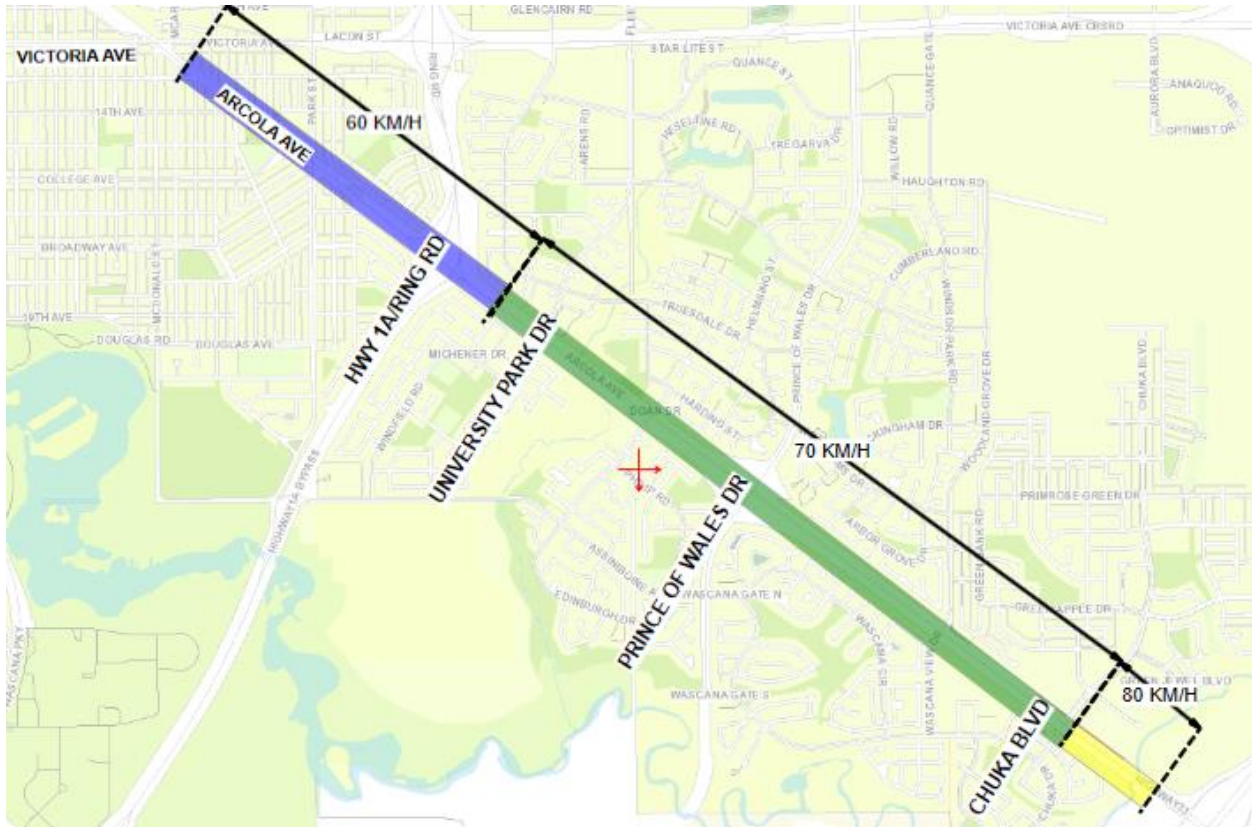
| Description | From | To | Limit (km/h) |
|---------------|--------------------------------------|--------------------------------------|--------------|
| Arcola Avenue | 50 m. East of Victoria Avenue | 150 m. East of University Park Drive | 60 |
| Arcola Avenue | 150 m. East of University Park Drive | East City Limits | 70 |

Discussion: It is recommended that the 60 kilometres segment of Arcola Avenue be expanded to 150 metres east of University Park Drive. This road segment has high traffic volumes and a higher frequency of collisions due to its proximity to Highway 1A. A lower speed limit will also allow for vehicles to safely merge as they enter and exit Highway 1A. It may also reduce the frequency of preventable collisions such as rear ends and side swipes.

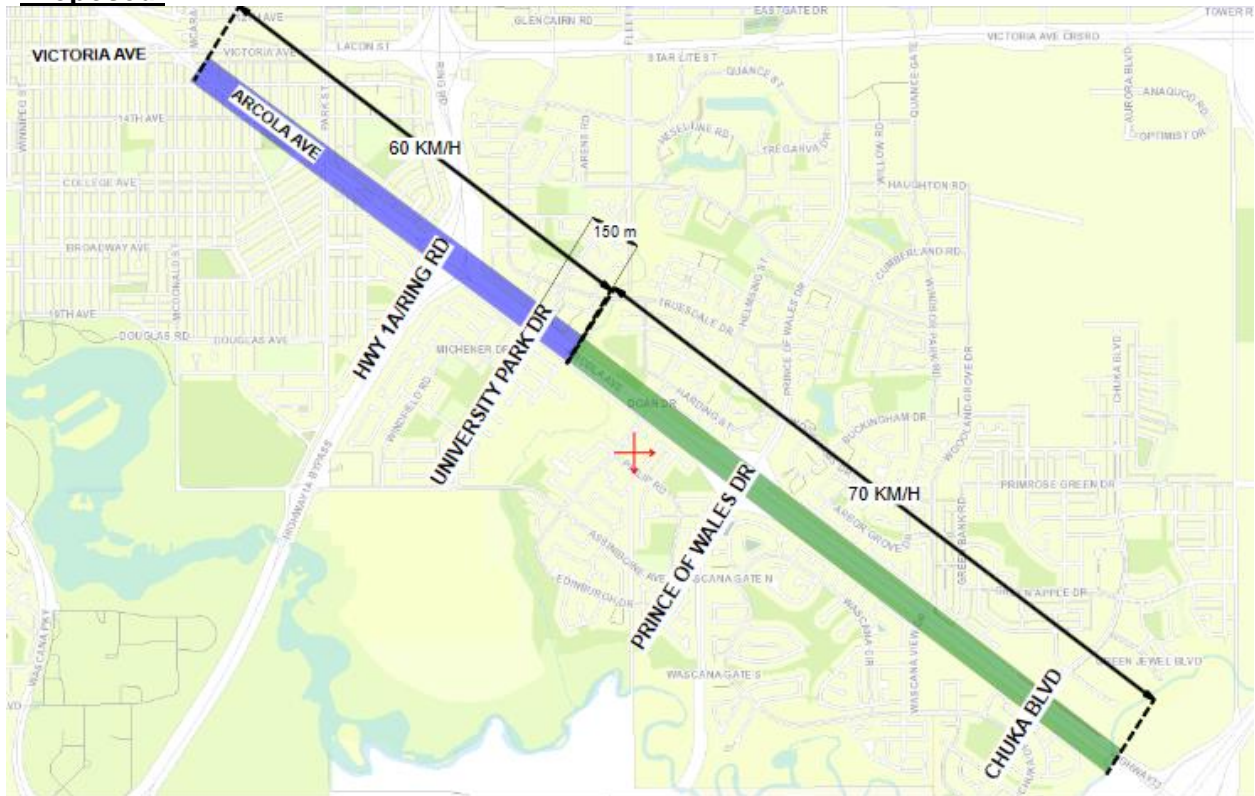
It is also proposed that the speed limit of Arcola Avenue between Chuka Boulevard and east city limits be reduced to 70 kilometres per hour to correspond with existing speed limits west of Chuka Boulevard and east of city limits on Highway 33. The changes will allow for consistency and lessen confusion between existing speed limit signs and the 80 kilometres per hour speed limit in the current traffic bylaw. The affected segment is 285 metres long and the change will not have significant impact to traffic along Arcola Avenue as there are already signs posted for the 70 kilometres per hour speed limit.

Upon approval, the speed limit signs will be changed to reflect the revised speed limits. Additional warning signage will be installed to alert drivers of the new speed limit boundaries. It is estimated that this will cost \$2000.

Existing:



Proposed:



Enforcement: Enforcement will be conducted through the Regina Police Service.