

MUNICIPAL ADDRESS: TBA
LEGAL DESCRIPTION: LSD 1 SEC 09 TWP 18 RGE 20 W2 EXT 51

BLOCK 130 R5 - MEDIUM DENSITY RESIDENTIAL ZONE DEVELOPMENT STANDARDS FOR DISCRETIONARY USE: DAYCARE

STANDARD	REQUIREMENT	ACTUAL
MINIMUM LOT AREA	500 m ² (0.12 ac)	5610.6 m ² (1.4 ac)
MINIMUM LOT FRONTAGE	15.0 m	89.93 m
SITE COVERAGE	MAX. 50%	14%
FLOOR AREA RATIO	3.00	0.14

Topography Schedule

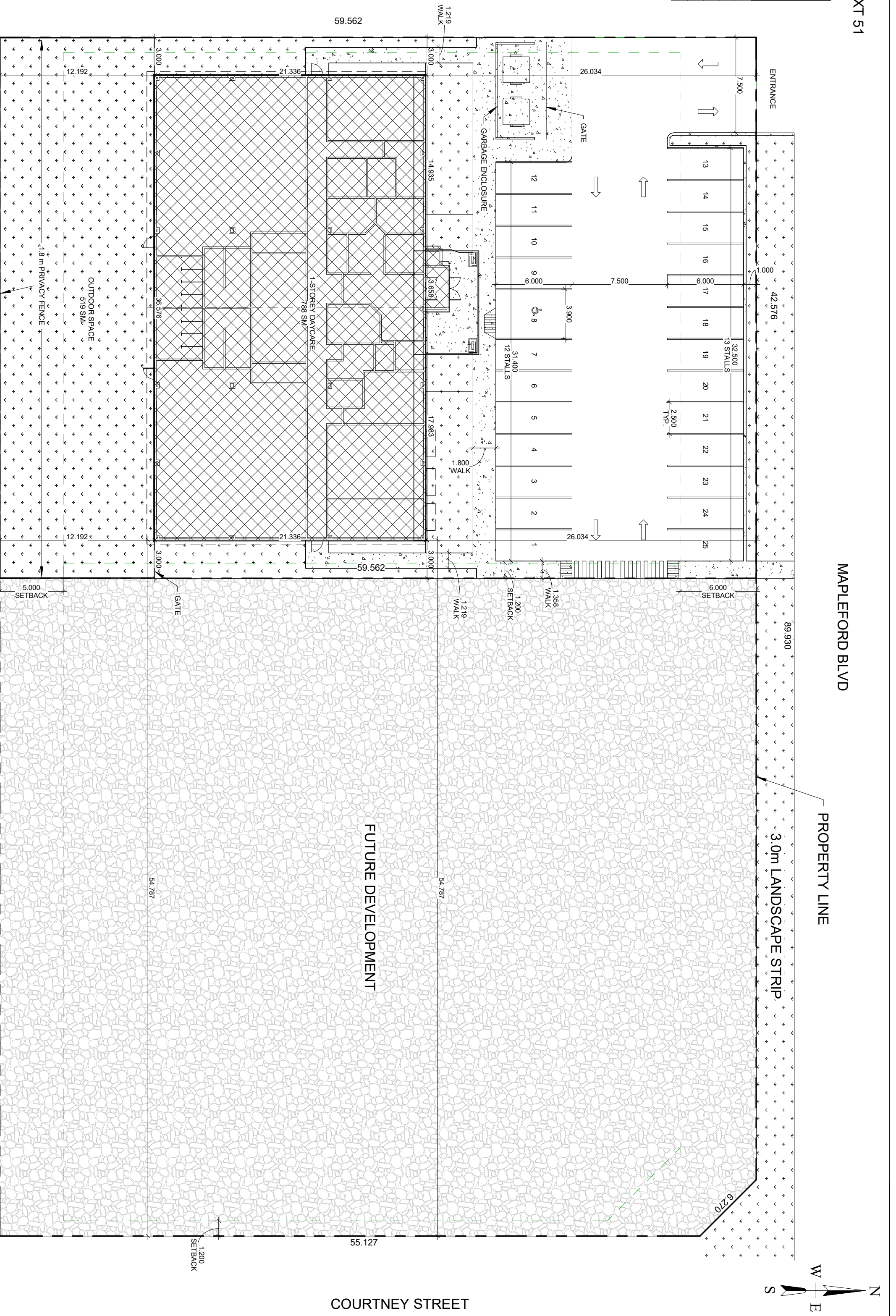
Name	Area	Coverage
Asphalt	755.327 m ²	13%
Building	728.827 m ²	14%
Concrete	219.624 m ²	4%
Landscape	771.763 m ²	14%
Undeveloped	3075.254 m ²	55%
	5610.598 m ²	100%

Parking Schedule

Qty	Description
24	Parking Spaces 2.5 x 6.0 - 90'
1	Parking Space 3.9 x 6.0 - 90' Accessible
Grand total	25

- ### NOTES
- ACCESS TO MAPLEFORD BOULEVARD MUST BE CONSTRUCTED AS PER THE CITY OF REGINA CONSTRUCTION STANDARD DRAWING R-10C
 - SITE LIGHTING TO BE ACCOMMODATED BY WALL PACKS ON BUILDING (SEE BUILDING ELEVATIONS)

BLOCK 131



1 Site Plan - Block 130
1 : 250

AREA TO BE DEVELOPED R5 - MEDIUM DENSITY RESIDENTIAL ZONE DEVELOPMENT STANDARDS FOR DISCRETIONARY USE: DAYCARE

STANDARD	REQUIREMENT	ACTUAL
MINIMUM LOT AREA	500 m ² (0.12 ac)	2535.9 m ² (63 ac)
MINIMUM LOT FRONTAGE	15.0 m	42.5 m
SITE COVERAGE	MAX. 50%	31%
FLOOR AREA RATIO	3.00	0.31
MAX. BUILDING HEIGHT	11.0 m	6.4 m
PARKING % OF ALL REQUIRED STALLS TO BE ACCESSIBLE	5 SPACES PLUS 2 FOR EACH INCREMENT OF 15 CHILDREN IN EXCESS OF 60 = 9	TOTAL STALLS 25 24 - 2.5m x 6.0m STALLS 1 - 4.8m x 6.0m ACCESSIBLE STALL

NEWROCK

DEVELOPMENTS INC.

671 Industrial Ave. SE, Medicine Hat, Alberta, T1A 3L5
Office: 403.529.1023 Fax: 403.529.1059

All drawings, designs and related documents are the property of NewRock Developments Inc. and are protected by copyright. All drawings, designs and related documents are the property of NewRock Developments Inc. and are protected by copyright, and must be returned upon request. Reproduction of drawings and documents in part or in whole is forbidden without the permission of NewRock Developments Inc. Drawings and documents are to be used only for the purpose for which they are issued.

Drawings are not to be used for construction until reviewed and approved by the Authority Having Jurisdiction. NewRock Developments Inc. reserves the right to make modifications to building and/or property design and modifications to specifications and/or features should they be necessary to maintain local building code requirements.

Revision Schedule

No.	Description	Date
1	Permit Submission	2019-10-10
2	Application Changes	2019-11-01
3	Note Addition	2019-11-15

FOR	DRAWING TITLE
Rosewood Park - Block 130	Site Plan
PROJECT	CREATION DATE: 09/27/19
Daycare Design	BY: SDR
Regina, SK	CHK: --
	JOB NO.
	Scale AS SHOWN

Revised 2019-11-15

COURTNEY STREET