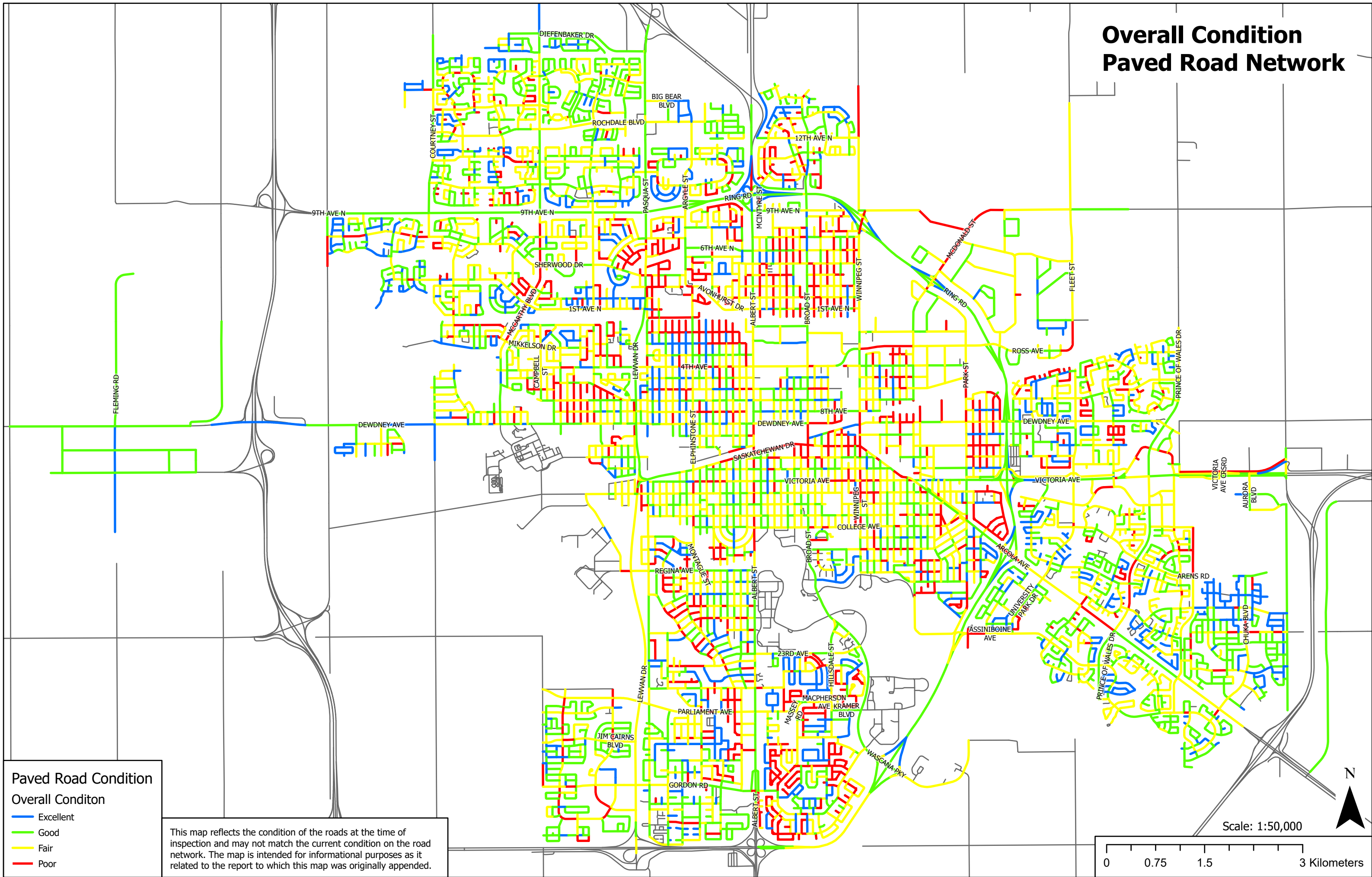


Overall Condition Paved Road Network



Paved Road Condition Overall Conditon

- Excellent
- Good
- Fair
- Poor

This map reflects the condition of the roads at the time of inspection and may not match the current condition on the road network. The map is intended for informational purposes as it related to the report to which this map was originally appended.

Scale: 1:50,000

0 0.75 1.5 3 Kilometers

N