

# THE TOWNS - PHASE 2 STAGE 1 PLAN OF PROPOSED SUBDIVISION

OF PART OF  
**SW1/4 SEC 14, TWP 17, RGE 19, W2 Mer**  
**REGINA, SASKATCHEWAN**  
**2020**

SCALE = 1:1000

**NOTES:**  
- MEASUREMENTS ARE IN METRES AND DECIMALS THEREOF.  
- SOME MEASUREMENTS ARE APPROXIMATE AND MAY DIFFER FROM THE FINAL PLAN OF SURVEY BY AS MUCH AS 1.0 %.  
- PORTION TO BE APPROVED IS OUTLINED WITH A BOLD DASHED LINE AND CONTAINS 4.00 ha (9.88 ac)  
- TYPICAL CORNER CUTOFFS ARE 4.5 METRES.  
- LOT WIDTHS SHOWN AS 10.97 ARE AT 6 METRE SETBACKS.

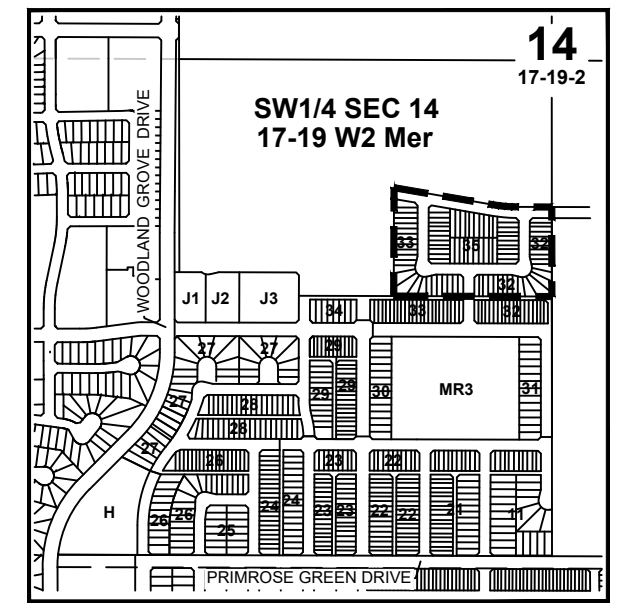
December-22-2020

DATE

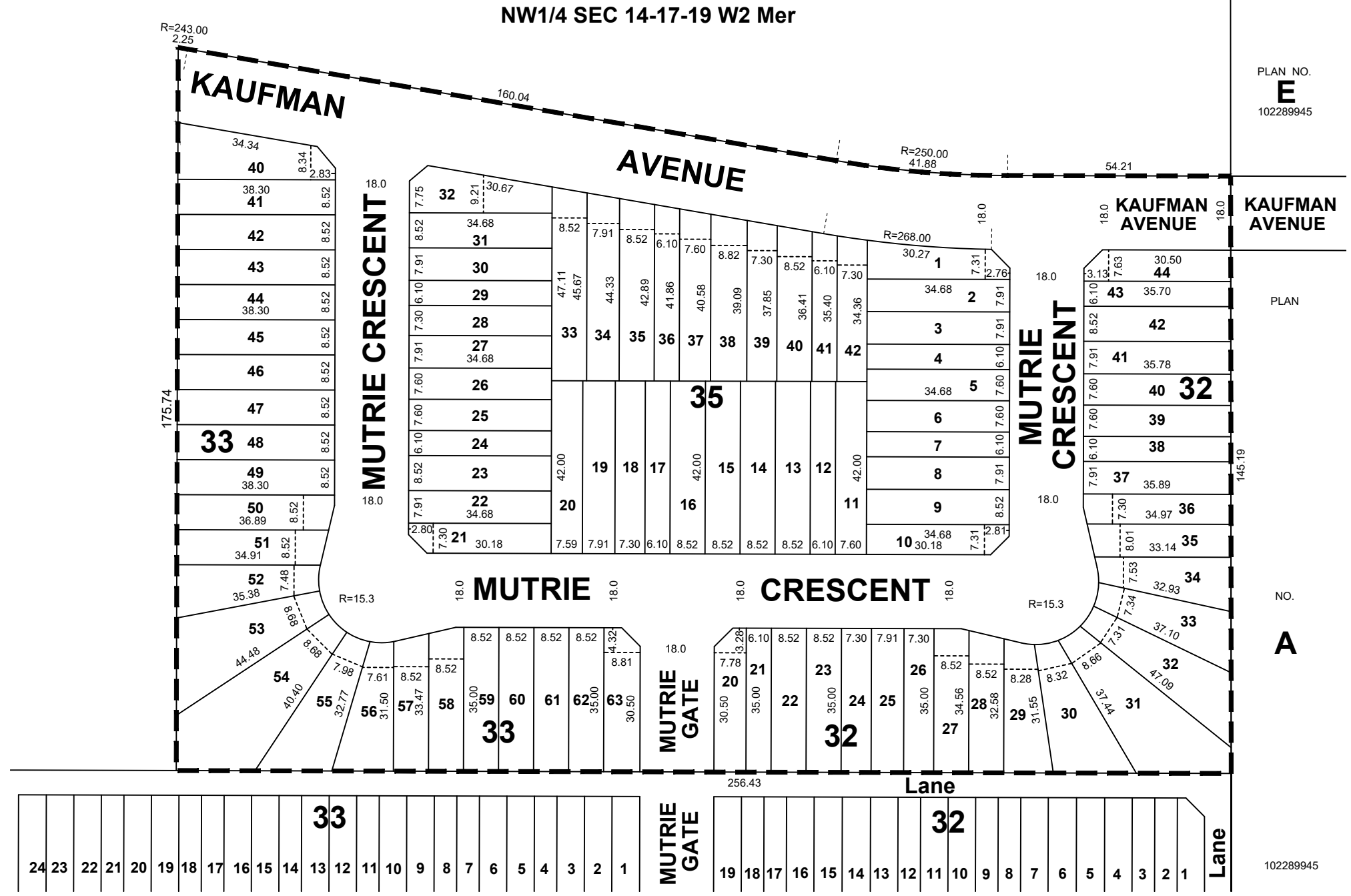
*S. Rajakumar*  
SURESHKUMAR RAJAKUMAR  
SASKATCHEWAN LAND SURVEYOR



**REDUCED DRAWING**  
**\* NOT TO SCALE \***



KEY PLAN



PLAN NO.  
**E**  
102289945

PLAN

NO.  
**A**

102289945

**CITY OF REGINA APPROVAL**  
THE SUBDIVISION PROPOSED HEREIN OUTLINED IN A BOLD DASHED LINE IS APPROVED UNDER THE PROVISIONS OF BYLAW NO. 7748-LA-B84 OF THE CITY OF REGINA.

DATED THIS \_\_\_\_ DAY OF \_\_\_\_\_ A.D. 20\_\_.

\_\_\_\_\_  
CITY CLERK

**OWNER:**  
\_\_\_\_\_  
CITY OF REGINA

