

**THE TOWNS - PHASE 1 STAGE 1H  
PLAN OF PROPOSED SUBDIVISION**

OF PART OF  
**SW1/4 SEC 14, TWP 17, RGE 19, W2 Mer  
REGINA, SASKATCHEWAN  
2017**

SCALE = 1:1000

**NOTES:**  
- MEASUREMENTS ARE IN METRES AND DECIMALS THEREOF.  
- SOME MEASUREMENTS ARE APPROXIMATE AND MAY DIFFER FROM THE FINAL PLAN OF SURVEY BY AS MUCH AS 1.0 %.  
- PORTION TO BE APPROVED IS OUTLINED WITH A BOLD DASHED LINE AND CONTAINS 6.25 ha (15.45 ac)  
- TYPICAL CORNER CUTOFFS ARE 4.5 METRES.  
- LOT WIDTHS SHOWN AS 7.34 ARE AT 6 METRE & 18 METRE SETBACKS.

Feb-02-2021

DATE

SURESHKUMAR RAJAKUMAR  
SASKATCHEWAN LAND SURVEYOR



OWNER:

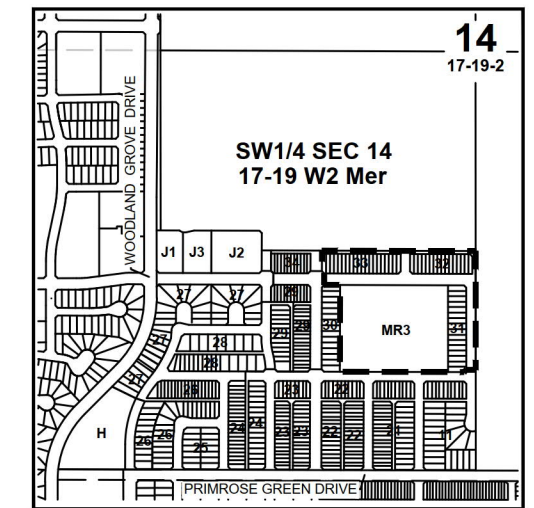
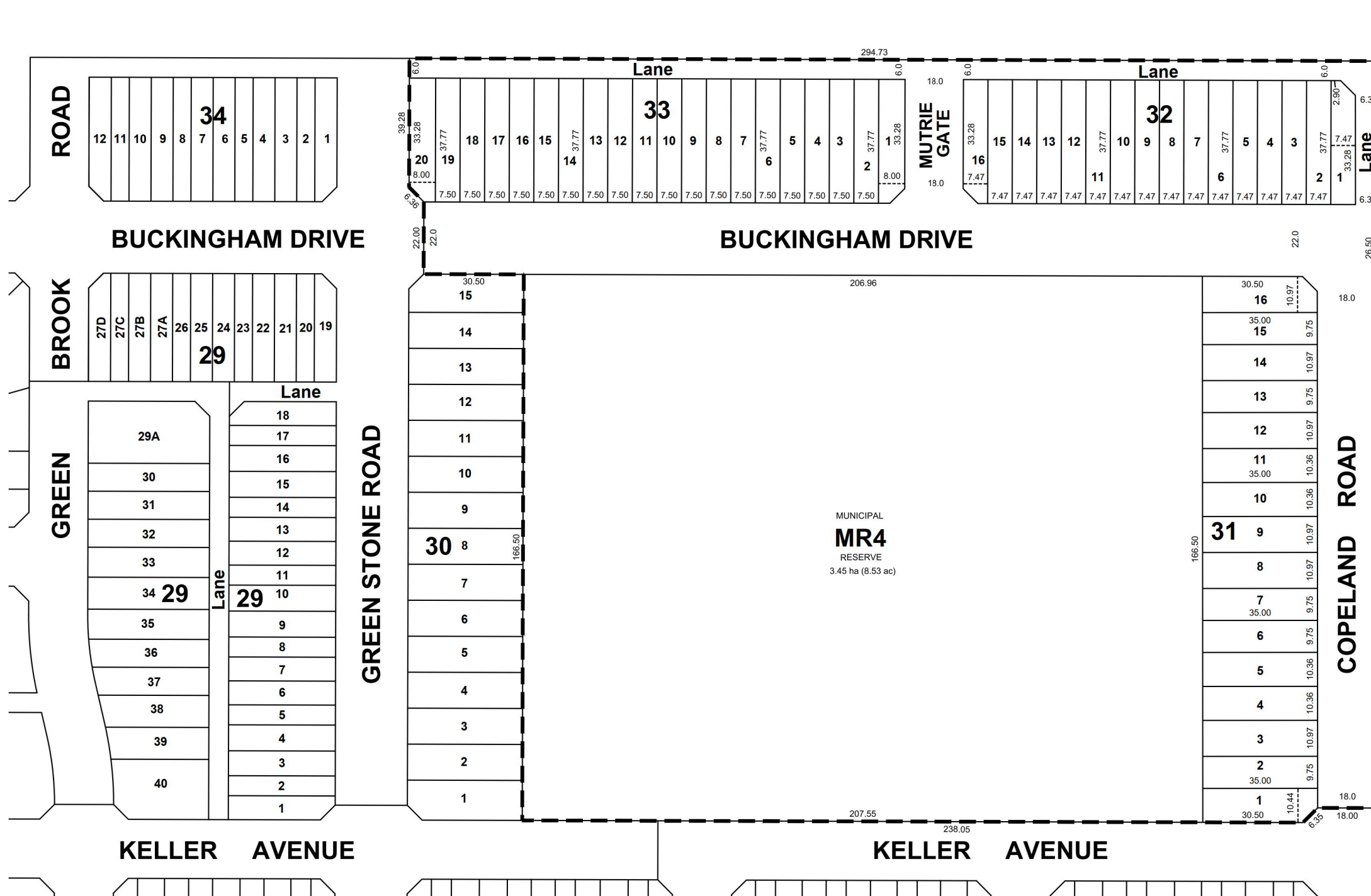
CITY OF REGINA

**CITY OF REGINA APPROVAL**

THE SUBDIVISION PROPOSED HEREIN OUTLINED IN A BOLD DASHED LINE IS APPROVED UNDER THE PROVISIONS OF BYLAW NO. 7748-LA-B84 OF THE CITY OF REGINA.

DATED THIS \_\_\_\_ DAY OF \_\_\_\_\_, A.D. 20\_\_.

CITY CLERK



**REDUCED DRAWING  
\* NOT TO SCALE \***