



COMMUNITY AND PROTECTIVE SERVICES COMMITTEE

**Wednesday, November 4, 2015
4:00 PM**

Henry Baker Hall, Main Floor, City Hall



**Public Agenda
Community and Protective Services Committee
Wednesday, November 4, 2015**

Approval of Public Agenda

Minutes of the meeting held on October 14, 2015

Administration Reports

CPS15-14 Sinking Ship Entertainment Playground Donation

Recommendation

1. That City Council approve the receipt of Sinking Ship Entertainment's playground donation valued at approximately \$300,000.
2. That City Council authorize the Executive Director of City Services to negotiate and approve an agreement with Sinking Ship Entertainment on behalf of the City of Regina.
3. That City Council authorize the City Clerk to execute the agreement, after review by the City Solicitor.
4. That this report be forwarded to City Council on November 23, 2015 for approval.

CPS15-15 Confederation Park Renewal

Recommendation

1. That a budget of \$2.1 million for the renewal of Confederation Park be considered through the 2016 budget process; and
2. That the Administration develop a detailed design for the renewal of Confederation Park as outlined in Option #1 in the discussion of this report.
3. That this report be referred to the 2016 budget process.

CPS15-16 Cemetery Fee Schedule for 2016 & 2017

Recommendation

1. That the Cemetery Fee Schedule for 2016 & 2017, as set out in Appendix A, be approved and the respective rates come into effect January 1, 2016.
2. That the City Solicitor be instructed to prepare and bring forward the necessary amendments to Schedule "A" of The Cemeteries Bylaw 2008-27 (the "Bylaw").
3. That this report and associated bylaw be forwarded to the November 23 meeting of City Council.

Adjournment

AT REGINA, SASKATCHEWAN, WEDNESDAY, OCTOBER 14, 2015

AT A MEETING OF THE COMMUNITY AND PROTECTIVE SERVICES
COMMITTEE
HELD IN PUBLIC SESSION

AT 4:00 PM

These are considered a draft rendering of the official minutes. Official minutes can be obtained through the Office of the City Clerk once approved.

Present: Councillor Jerry Flegel, in the Chair
Councillor John Findura
Councillor Bob Hawkins
Councillor Mike O Donnell

Regrets: Councillor Shawn Fraser

Also in Attendance: Council Officer, Ashley Thompson
Solicitor, Chrystal Atchison
Executive Director, City Services, Kim Onrait
Director, Transit Services, Brad Bells
Manager, Business Development-Transit, Nathan Luhning

APPROVAL OF PUBLIC AGENDA

Councillor Bob Hawkins moved, AND IT WAS RESOLVED, that the agenda for this meeting be approved, as submitted.

ADOPTION OF MINUTES

Councillor John Findura moved, AND IT WAS RESOLVED, that the minutes for the meeting held on September 9, 2015 be adopted, as circulated.

ADMINISTRATION REPORTS

CPS15-12 Discounted Bus Pass Program

Recommendation

1. That City Council approve the City's continued participation in the Saskatchewan Discounted Bus Pass Program.
2. That City Council delegate authority to the Executive Director, City Services to negotiate and approve a Letter of Understanding agreement regarding the Discounted Bus Pass Program as outlined in this report.
3. That the City Solicitor be instructed to amend The Regina Administration Bylaw, No. 2003-69 be amended to delegate authority to the Chief Operating Officer (or designate) to negotiate and approve grant agreements for receipt of provincial funding for the Discounted Bus Pass Program for individuals participating in Government of Saskatchewan Social Services programs.
4. That this report be forwarded to City Council on October 26, 2015 for approval.

Councillor Mike O'Donnell moved, AND IT WAS RESOLVED, that the recommendations contained in the report be concurred in.

CPS15-13 New Statutory Holiday Service Review

Recommendation

That this report be received and filed.

Councillor John Findura moved the recommendation contained in the report.

Councillor John Findura moved, AND IT WAS RESOLVED, that this report be forwarded to City Council on October 26, 2015 for information.

ADJOURNMENT

Councillor John Findura moved, AND IT WAS RESOLVED, that the meeting adjourn.

The meeting adjourned at 4:25 p.m.

Chairperson

Secretary

November 4, 2015

To: Members,
Community & Protective Services

Re: Sinking Ship Entertainment Playground Donation

RECOMMENDATION

1. That City Council approve the receipt of Sinking Ship Entertainment's playground donation valued at approximately \$300,000.
2. That City Council authorize the Executive Director of City Services to negotiate and approve an agreement with Sinking Ship Entertainment on behalf of the City of Regina.
3. That City Council authorize the City Clerk to execute the agreement, after review by the City Solicitor.
4. That this report be forwarded to City Council on November 23, 2015 for approval.

CONCLUSION

Sinking Ship Entertainment (SSE) is a reputable Canadian production company that is seeking support from capital cities across Canada in their pursuit of celebrating Canada's 150th anniversary. This playground design and installation project is a way to showcase Regina and its citizens, while at the same time increasing play opportunities for a local neighbourhood through the installation of a new playground. This television production will allow for local children to be engaged in the design of the playground, building a sense of pride in their neighbourhood. This will also build a level of national pride in communities across the country as we celebrate Canada's 150th anniversary. For these reasons, the Administration recommends moving forward in partnership with SSE on their proposed Regina project.

BACKGROUND

SSE is an award winning production, distribution and digital media company that specializes in kid's live-action cross-platform content. Since its launch in 2004, SSE has built a reputation for high quality ground-breaking work in both their Daytime Emmy Award winning original series, *Dino Dan's: Trek's Adventures* and companion interactive experiences. Some of their productions include, *Odd Squad*, *Giver*, *Are We There Yet?: World Adventure* and *This is Daniel Cook*.

In celebration of Canada's 150th anniversary, SSE is partnering with capital cities across Canada to install a playground in each city with the assistance of local children and volunteers.

DISCUSSION

In June of this year the Administration was approached by SSE, who was making contact with capital cities across Canada, seeking partnerships to form part of a national level project celebrating Canada's 150th anniversary. The proposed project is based on a television program that is currently produced by SSE in Ontario, named *Giver*. This national version of the television program would involve SSE working with municipal governments and communities in capital cities across Canada to replace or install a new playground in each city in 2016, with the television program being aired in 2017 as part of Canada's 150th anniversary.

In order to implement the project, SSE will be working with municipalities across Canada to select locations for the installation of a new playground. Once the site has been selected for Regina, SSE will begin their sponsorship and fundraising campaign locally, provincially and nationally to cover the purchase and installation of the playground, which is estimated to cost \$300,000. SSE has requested that the Administration then assist in connecting their company with local neighbourhood children in order to gather feedback and select children between the ages of 7 – 13 to be involved in the television production. Once casting has taken place, SSE and their design team will work with the selected children to bring their ideas to life through the design of a new playground - to be installed at the selected site. The design will then be reviewed by the Administration to ensure that it meets City of Regina (City) standards.

Upon approval, SSE requires the City to prepare the site so that it is ready for the playground installation. Depending on the selected site, this may involve demolition of an existing structure, excavation, irrigation repairs and the installation of timber edging to outline the site. These costs are estimated to be \$10,000 - \$20,000, depending on the selected location. Once the site is prepared, SSE will mobilize to the site to film the construction of the playground using local volunteer labour over a four-day period. Once construction is complete, the final day will include a ribbon cutting ceremony with local dignitaries and the children involved in design.

Other in-kind requirements of the Administration include the provision of a contact person, locally, to support planning as well as a contact to assist in the coordination of local volunteers. This work is expected to take place over the next 10 months with the majority of work taking place in the month prior to filming. At this time the schedule has not been confirmed, however, it is expected that construction will take place in early fall of 2016.

It is the Administration's understanding that all other capital cities across Canada will be participating in this national project to celebrate Canada's 150th anniversary.

RECOMMENDATION IMPLICATIONS

Financial Implications

The playground that SSE will install will be scaled dependent upon the funds raised through fundraising and sponsorships, but is estimated at a cost of \$300,000. Expectations of the City include in-kind labour and financial contributions of approximately \$20,000 for the development of the site in preparation for the installation of the playground.

Capital funding for this project will come from current approved playground restoration capital funding. Although this funding was allocated for playground surfacing replacement, funds remaining in the account are insufficient to proceed with another playground resurfacing in 2015, based on current tender prices. Instead, funds will be used for the *Giver* project which in turn will have a much greater return on investment.

Operating impacts of this project are minimal and will not require additional operational funding.

Environmental Implications

There are no environmental implications associated with this report.

Policy and/or Strategic Implications

The development of playgrounds and parks supports the community priority to develop complete neighbourhoods as identified in *Design Regina: The Official Community Plan*. This project is also supported by principles of the Recreation Facility Plan, such as clustering recreation facilities within parks to encourage the development of community destinations and neighbourhood hubs. This provides opportunities for citizens to socialize and for people with common interests to meet and enjoy the amenities that the community has to offer.

Other Implications

There are no other implications related to this report.

Accessibility Implications

Inclusive play will be encouraged through the design of the playground.

COMMUNICATIONS

The Communications and Community Services Departments will work with SSE to develop a communications strategy for the project.

DELEGATED AUTHORITY

City Council approval is required for this report.

Respectfully submitted,



Laurie Shalley, Director
Community Services

Respectfully submitted,



Kim Onrait, Executive Director
City Services

Report prepared by:
Janine Daradich, Manager, Recreation Facility Development and Partnerships

November 4, 2015

To: Members,
Community and Protective Services Committee

Re: Confederation Park Renewal

RECOMMENDATION

1. That a budget of \$2.1 million for the renewal of Confederation Park be considered through the 2016 budget process; and
2. That the Administration develop a detailed design for the renewal of Confederation Park as outlined in Option #1 in the discussion of this report.
3. That this report be referred to the 2016 budget process.

CONCLUSION

Administration is proposing a renewal of Confederation Park in an effort to bring its assets and amenities to a standard that will enable events and programming at the site, conserve and celebrate an important civic cultural asset, and improve the quality of park space to strengthen community health and vibrancy. The renewed space will serve both city-wide uses that complement activities at Evraz Place as well as provide a neighbourhood gathering space for the growing community.

A consultation process has been conducted, involving the North Central Community Association, Heritage Regina, The Regina Exhibition Association Limited (REAL) and the Saskatchewan Roughrider Football Club Inc. (Roughriders). This report provides a recommended path for moving forward with the detailed design for the park, based on the community consultation process.

BACKGROUND

The earliest mention of the construction of a park adjacent to the Exhibition Grounds appears in a letter from the Secretary of the Exhibition Association to the Mayor and Council of Regina dated August 17, 1918. With great interest in the outcomes of building the asset, in 1926, plans were made by the City for the construction of a park to be timed with Canada's celebration of 60 years of Confederation. Construction of Confederation Park and fountain was completed in 1927 and named in commemoration of the 60th Diamond Jubilee that year. Confederation Park, constructed to beautify the Exhibition Grounds, provides a respite area for the public, an entrance way and adjacent outdoor programming space for the stadium as well as park space to serve the growing community. Currently one of Regina's oldest historic parks, Confederation Park has served the neighbourhood and Exhibition Grounds visitors for 88 years.

The Regina Revitalization Initiative (RRI) was formally initiated by City Council on May 30, 2011. A process was initiated to define a vision and shared understanding of the outcomes of the project, which would see residential, commercial and retail development in the area - including a facility to replace Mosaic Stadium. Based on the need to establish a clear future direction for the project, City Council further approved a vision and guiding principles document on August 22, 2011. On May 7, 2014 the contract was signed with PCL Construction to proceed with the construction of the new stadium that would be complete in July, 2017. The new stadium is adjacent to Confederation Park, which will be used as an entrance to the new stadium as well as a space that further activates and supports large events and their economic impacts.

Since the start of the stadium construction, the Federal Government has announced a number of funding programs as part of the celebration of our country's 150th anniversary. One of these programs, the Canada 150 Community Infrastructure Program, supports projects that rehabilitate existing community infrastructure which celebrate our shared heritage, create jobs, and improve the quality of life for citizens. The program aims to ensure a lasting legacy as a result of Canada 150 and strengthen communities from coast to coast to coast. The City has submitted an application for a renewal of Confederation Park, but has not yet received communication on the outcome of the application.

DISCUSSION

Confederation Park, which is adjacent to the new stadium, is currently in need of renewal in order to better serve community need. The park has served the neighbouring communities and visitors to the grounds for 88 years, but in that time the assets have deteriorated and are in need of capital investment. The renewal serves to bring the park and its assets and amenities to a standard that will enable events and programming complementary to other Evraz Place activities, conserve and celebrate an important civic cultural asset, and improve the quality of park space to strengthen community health and vibrancy. The Administration prefers a renewal of the park to be completed in 2016 in order for the construction completion to coincide with the opening of the new stadium and Canada's 150th anniversary.

The Administration has explored two options for the renewal of the park space, ranging in cost from \$2.1 million for Option #1 to \$2.8 million for Option #2. After completing a community consultation process with involvement from REAL, the Roughriders, the North Central Community Association and Heritage Regina, the Administration is recommending Option #1 for implementation. Information on both options is as follows:

Option #1 – Park Renewal with Replica Fountain (Recommended)

Through the engagement process, key considerations emerged related to the park redesign. They included providing a space for celebrations and events, ensuring opportunity for quiet and contemplative space, keeping the tree canopy, emphasizing the main entrance to the park, and ensuring the historic, aesthetic and social values of the park were honoured.

In keeping with typical cultural resource management practises, the Administration evaluated the feedback in the context of the Heritage Value Assessment of the park and developed a conceptual design (Appendix A). This design addresses the feedback in the context of future use of the space and, at a cost of approximately \$2.1 million, is the Administration's recommended approach. The planned project, which is multi-faceted, would include renovation and refurbishment to a variety of assets in Confederation Park. This option is supported by the stakeholders and community and, where possible, would include the use of materials and finishes that are suitable to the cultural and historical intent of the space.

The park redesign would involve casting and developing heritage record drawings of the existing fountain. This information would then be used to create a replica fountain to be the continued central water feature of the park. Keeping this central water feature would ensure the preservation of the historic and aesthetic value of the park while not significantly compromising the social and recreation opportunities.

This design option also includes investments towards a high-quality park and entranceway to the stadium via stamped coloured asphalt entrance points and the addition of urns for floral displays. Also included would be the addition of seating, installation of new lighting, refurbishment of the turf and tree pruning and planting. As well, screens for the transformers would act as canvas space for historical didactics, further educating and celebrating the social and historical significance of the site.

Based on the consultation with stakeholders and community, the Administration believes this option provides the fullest compromise of cost while meeting program needs.

Option #2 – Enhanced Park Renewal with Restoration of Original Fountain

Option #2 is very similar to Option #1 however it does include an upgrade from asphalt pathways to stamped and coloured concrete pathways and entrances. This was considered for aesthetic purposes as well as durability. One other significant cost increase is the restoration of the fountain and basin rather than the creation of a replica fountain.

The fountain has reached its life expectancy and has not been operational since 2012, due to its deterioration. A consultant assessment undertaken on Confederation Fountain noted that significant work would be needed to conserve and repair it. It was determined through the assessment that the existing concrete contains alkali aggregate reaction, which means that the concrete is currently unstable. The result of the concrete being unstable is that the surface concrete would need to be removed until stable concrete could be reached, to ensure successful patching. The assessment also states that a new hydraulic system would have to be installed, which would require discretely drilling through the existing fountain for the installation of new pipes and water lines. However, the assessment does not address what effect the drilling would have on the unstable concrete. Due to the poor condition of the fountain and significant interventions needed to complete a refurbishment, if a restoration were to be undertaken, it is anticipated that little of the original fountain structure would remain. This has been discussed with Heritage Regina and due to the significant interventions required they are supportive of moving forward with a replica for the purposes of the renewal project.

Based on the community feedback received, and the assessment of the fountain, at a cost of \$2.8 million it is not recommended that this option be pursued.

It should be noted that during the engagement process there was interest expressed by representatives from the North Central Community Association that a pleasure skating rink be incorporated into the renewal plans. This was considered through the concept planning process. The assessment revealed that, due to the high level of maintenance standard at a city-wide destination park, along with the high level of expected park use, maintenance costs to protect the turf would be cost prohibitive. To address interest in skating, there are currently outdoor skating rinks located at Leslie Park, Grassick Playground Park as well as public skate time at the Co-operators Centre. Through the engagement process the Administration also committed to sharing the groups feedback for consideration through the planning process for the Redevelopment of the Taylor Field Neighbourhood project. It should also be noted that this service level for outdoor rinks addresses the standard adopted by Council in the Recreation Facility Plan, which is to provide an outdoor rink within 2.5 to 3.0 kilometers of most households.

RECOMMENDATION IMPLICATIONS

Financial Implications

This project would come at a cost of \$2.1 million and is to be considered through the 2016 budget process. The proposed source of funding is the Deferred Dedicated Lands Account, which is to be used to fund parks and recreation development and redevelopment projects. At this time, the account has a balance of \$5,312,630. If this budget request is approved, the remaining balance in the Deferred Dedicated Lands Account would be \$3,212,630.

The City has also applied for a Canada 150 Community Infrastructure Grant. If successful, the total investment in the park from the Dedicated Lands Reserve could be reduced by as much as \$500,000.

Currently, Confederation Park forms part of the overall REAL lease for the Exhibition Grounds and is maintained and operated by REAL. The park will remain as part of this lease and specific operating and maintenance procedures will be contemplated as part of the stadium operating and maintenance agreement that the City will enter into with REAL.

Environmental Implications

None with respect to this report.

Policy and/or Strategic Implications

The renewal to Confederation Park is consistent with the policies of the Official Community Plan, *Design Regina* (OCP). Specifically, the renewal of the historic park meets the Goal of “enhancing the quality of life and strengthening community identity through supporting cultural development and cultural heritage.”

A renewal of Confederation Park will also meet the Parks and Open Space goal of the OCP by “ensuring access to a variety of recreation programs and services in all neighbourhoods.”

Other Implications

None with respect to this report.

Accessibility Implications

Accessibility will be taken into account throughout all aspects of the design and renewal of Confederation Park.

COMMUNICATIONS

As noted, the Administration held engagement sessions with REAL, the Roughriders, Heritage Regina and the North Central Community Association to discuss the scope of the project. All organizations are supportive of moving forward with Option #1, as it is the best compromise between budget and function.

Staff will work closely with the Communications Department to keep the public informed regarding the construction.

DELEGATED AUTHORITY

The recommendations contained in this report require City Council approval.

Respectfully submitted,

A handwritten signature in blue ink that reads "Laurie Shalley".

Laurie Shalley, Director
Community Services

Respectfully submitted,

A handwritten signature in blue ink that reads "Kim Onrait".

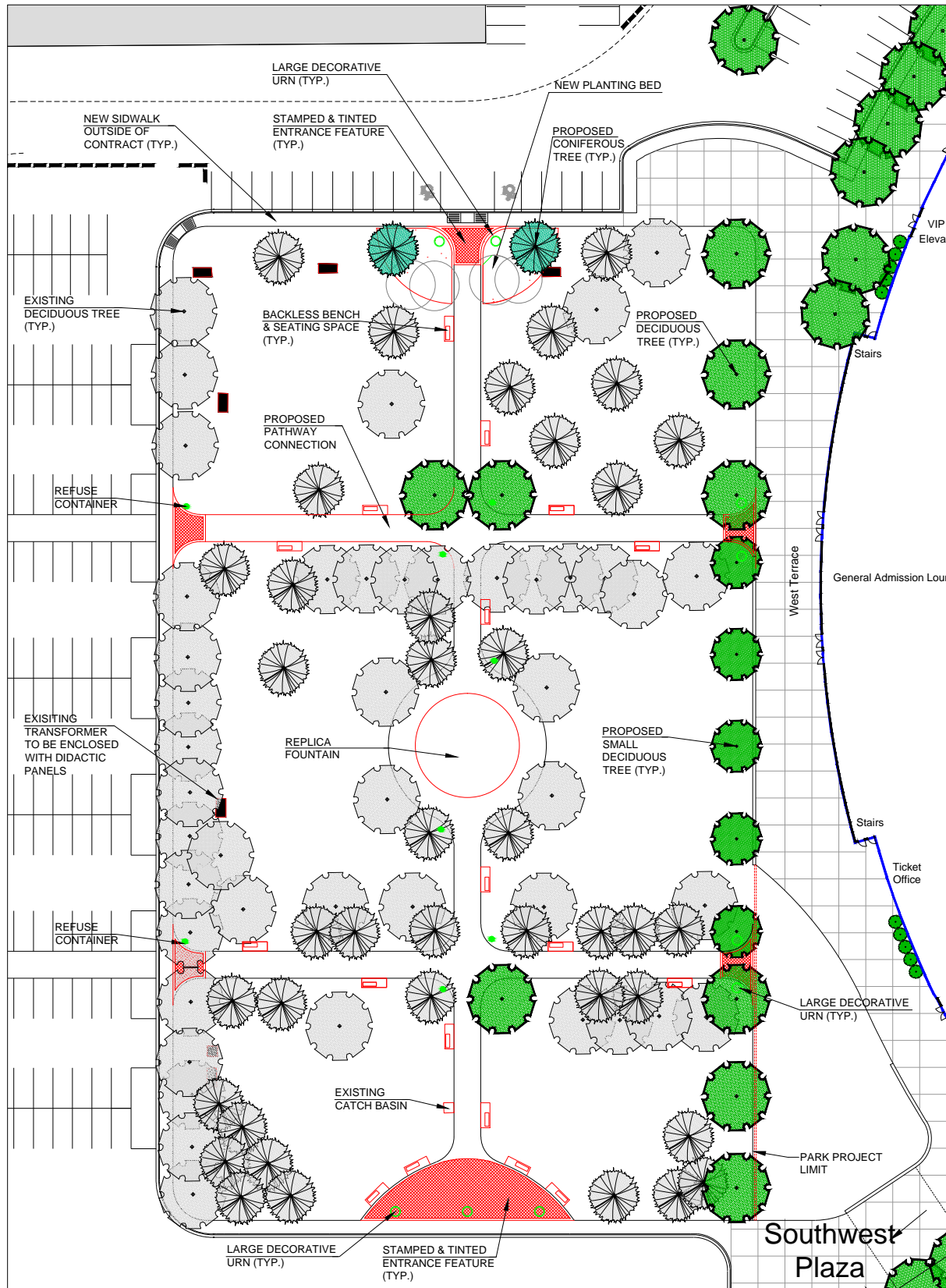
Kim Onrait, Executive Director
City Services

Report prepared by:

Janine Daradich, Manager, Recreation Facility Development & Partnerships

Jeff Erbach, Manager, Community & Cultural Development

Appendix A



SEPTEMBER 23, 2015
SCALE 1:250
ON ARCH D

PRELIMINARY CONCEPT PLAN CONFEDERATION PARK

November 4, 2015

To: Members,
Community and Protective Services Committee

Re: Cemetery Fee Schedule for 2016 & 2017

RECOMMENDATION

1. That the Cemetery Fee Schedule for 2016 & 2017, as set out in Appendix A, be approved and the respective rates come into effect January 1, 2016.
2. That the City Solicitor be instructed to prepare and bring forward the necessary amendments to Schedule “A” of The Cemeteries Bylaw 2008-27 (the “Bylaw”).
3. That this report and associated bylaw be forwarded to the November 23 meeting of City Council.

CONCLUSION

The City of Regina cemeteries are operated on a cost-recovery basis. Annual operating expenses continue to rise. The proposed 2016 and 2017 fee increases are necessary to:

- Compensate for rising operating expenses;
- Continue the necessary restoration of existing infrastructure; and
- Provide capital funding to develop new interment options to meet customer expectations at both Riverside Memorial Park Cemetery and Regina Cemetery.

The resulting fees will be in line with other municipally-operated cemeteries in Saskatchewan and other western provinces.

BACKGROUND

The City of Regina operates two cemeteries, Riverside Memorial Park Cemetery and Regina Cemetery, which together have operated on a cost-recovery basis since 1987. Cemetery revenues come from two sources: fees and charges for goods and services provided and interest income generated by the Care and Maintenance Trust Fund. This fund, comprised of a percentage from each plot sale, was established several years ago to provide for the perpetual care and maintenance of the cemeteries. In 1999, an amendment to the Cemeteries Act exempted municipally-owned cemeteries from maintaining a Care and Maintenance Trust Fund. Since then, no contribution from plot sales has been allocated to the fund.

Operating surpluses, resulting from annual revenues exceeding expenses, are transferred to the Cemetery Reserve. Conversely, any operating deficits are withdrawn from the Reserve to fund the shortfall. As well, the Reserve is used to fund capital projects, infrastructure restoration and any expansion within the cemetery program.

DISCUSSION

Interment frequency has remained fairly unchanged over the past number of years. This will limit the opportunity for increased revenue without raising the fees and charges for the goods and services provided.

In November 2013, City Council approved a general fee increase of 5 per cent for 2015 and 2016; on most fees. Infant and child plots, interments and niches in the Prairie Rose Columbaria located at Regina Cemetery remained at 2011 rates. Additionally, administrative costs associated with record searches remained unchanged. Other rate adjustments began to bring fees in line with those charged for similar services at other municipally-operated cemeteries in Saskatchewan and other western provinces.

Interest earned through the Care and Maintenance Trust Fund continues to be impacted by the worldwide 2008 correction in investment fund returns. In 2002, the return on investment of the Fund was \$284,600. In 2014, the investment return was \$112,034 with no change to the principal balance. This decline in investment income has had a significant impact on cemetery revenue with no expectation that it will return to pre-2003 levels in the foreseeable future.

Annual operating expenses are impacted by increases in labour, equipment, material, fuel, and utility costs. Administration is projecting a 2.80 per cent Municipal Price Index (MPI) rate increase for operating costs in 2016. A similar MPI is assumed for 2017. Based on these cost projections this represents a \$32,370 operating budget increase in each of the next two years.

The capital program funds the installation of new cemetery assets and infrastructure as well as restoration of existing assets. Over the last ten years, the capital program has focused on the installation of new columbaria and strip foundations. The introduction of these new elements has been very successful in responding to customers' needs, while improving the revenue stream for the cemetery program. In the fall of 2015, Phase III of a multi-phase development consisting of a 100-niche columbarium was constructed at Riverside Memorial Park Cemetery to meet the needs of the community. This new unit is in addition to the Phase I & II columbaria of 191 and 104 niches that were installed in 2010 and 2013 respectively. As well, a 48-niche indoor columbarium was added to the chapel in the fall of 2011 and an additional 24 units were added in the spring of 2015.

It is anticipated that an additional 100-niche columbarium will need to be developed in 2017 to meet needs beginning in 2018.

Conversely, limited funding has been allocated to repair and restore existing assets and infrastructure, such as roads, irrigation systems, turf and trees. It is vital that the aging infrastructure, of which much is beyond its replacement lifecycle period, be addressed. The proposed fee increase will provide new products to meet customer needs as well as begin addressing the aging infrastructure.

In developing the proposed fee schedule, the Administration undertook a review of other municipally-operated cemeteries. Typically, municipalities increase their fees and charges on an annual basis. In many jurisdictions, infrastructure restoration, upgrades and new development are funded from the municipal mill rate. Some municipalities use the mill rate to provide supplemental funding for annual operating expenditures. The proposed 2016 and 2017 fee schedule does not recommend any fundamental changes to the funding model currently in place. The proposed fees are in line with those charged by other municipally-operated cemeteries in Saskatchewan and other western provinces as set out in Appendix B.

The following are the highlights of the proposed fee schedule:

- 5 per cent increase on most fees (effective January 1, 2016)
- 5 per cent increase on most fees (effective January 1, 2017)

Administration reviewed every fee item in the current schedule. As a result, several fees in the proposed schedule will remain unchanged. These items generate minimal sales, yet represent a reasonable value to the purchaser. Maintaining the current fee may encourage interest and sale of these items. Other fees will be increased to bring them in line with similar services provided at other municipally-operated cemeteries.

RECOMMENDATION IMPLICATIONS

Financial Implications

The cemetery expenditures and revenues reflected in the proposed 2016 Operating and Capital Budgets are based on the overall fee increase being proposed. The 2016 forecasted revenue is a total of \$1.25 million, based on this projection, \$15,675 will be transferred to the Cemeteries reserve for future capital projects. Approval of the proposed fee schedule will ensure that there is funding available to meet increased operating expenses and to continue to address capital infrastructure requirements.

Environmental Implications

None with respect to this report.

Policy and/or Strategic Implications

The actions of the Administration as an outcome of this report will contribute to operational excellence and strengthen the infrastructure and management of cemetery assets.

Other Implications

None with respect to this report.

Accessibility Implications

None with respect to this report.


COMMUNICATIONS

Information about the new rates will be distributed to funeral homes and monument suppliers in the Regina area and will be available at City Hall, Riverside Memorial Park Cemetery and Regina.ca.

DELEGATED AUTHORITY

The recommendations contained within this report require City Council approval.

Respectfully submitted,

A handwritten signature in cursive script, appearing to read "Ray Morgan".

Ray Morgan, Director
Parks & Open Space

Respectfully submitted,

A handwritten signature in cursive script, appearing to read "Kim Onrait".

Kim Onrait, Executive Director
City Services

Report prepared by:
Ken Poure, Manager, Cemeteries, Golf Courses & Landscape Trades

2016 and 2017 CEMETERY FEES AND CHARGES

Fee Schedule	2016	2017
Cemetery License Fees - Lot		
Standard Lot – Riverside & Regina	\$1,500.00	\$1,575.00
Standard Lot with Continuous Strip Foundation	\$1,970.00	\$2,070.00
Option Area Standard Lot	\$2,160.00	\$2,270.00
Field of Honour	\$755.00	\$795.00
Child Lot	\$645.00	\$645.00
Infant Lot	\$230.00	\$230.00
Cremation Lot – Single Urn	\$565.00	\$595.00
Cremation Lot – Standard with Continuous Strip Foundation	\$1,575.00	\$1,655.00
Option Area Standard Cremation	\$1,770.00	\$1,860.00
Cemetery License Fees - Columbarium Niche		
Prairie Rose Columbarium – Regina Cemetery	\$2,010.00	\$2,010.00
Masonic Columbarium	\$3,250.00	\$3,415.00
Indoor/Outdoor Columbarium – Standard (Indoor top or bottom row & Outdoor bottom 2 rows)	\$3,250.00	\$3,415.00
Indoor/Outdoor Columbarium – Premium	\$3,540.00	\$3,720.00
Outdoor Columbarium – Family	\$4,220.00	\$4,435.00
Interments		
Standard Casket (over 4 feet)	\$1,035.00	\$1,090.00
Child Casket (up to 4 feet)	\$500.00	\$500.00
Infant Casket (up to 2 feet) or infant cremated remains	\$215.00	\$215.00
Cremated Remains – Maximum 18"x18" opening	\$335.00	\$355.00
Scattering/Ossuary/Niche/Oversize opening for Cremated Remains/Additional cremated remains in ground/Non Standard Vault	\$160.00	\$170.00
Urn in Casket/Multiple Cremated Remains in Niche same time same location	\$85.00	\$90.00
Late afternoon Surcharge – for interment services leaving cemetery after 4 p.m.	\$310.00	\$330.00
Weekend/Holiday Surcharge – traditional	\$580.00	\$610.00
Weekend/Holiday Surcharge – cremated remains	\$310.00	\$330.00
Disinterment		
Disinterment – Standard Casket	\$3,080.00	\$3,235.00
Disinterment – Child Casket	\$1,740.00	\$1,830.00
Disinterment – Cremated Remains – In ground	\$495.00	\$520.00
Memorial and Memorialization		
Application Fee	\$135.00	\$145.00
Installation of Flat marker – small	\$200.00	\$210.00
Installation of Flat marker – large	\$275.00	\$290.00
Purchase and Installation of Precast Monument Foundation	\$345.00	\$365.00
Removal of Precast Monument Foundation or Flat Marker	\$190.00	\$200.00
Other		
Bronze Plaque	\$450.00	\$475.00
Chapel Bookings (for each full or partial hour)	\$115.00	\$125.00
Indoor Columbarium Vase	\$240.00	\$255.00
Maintenance Dome – Adult	\$475.00	\$500.00
Maintenance Dome Base – Adult	\$250.00	\$265.00
Maintenance Dome – Child	\$220.00	\$235.00

Deferred Payment Administration Fee	\$85.00	\$90.00
License Transfer Fee	\$160.00	\$170.00
Hourly Service Rate (for each full or partial hour)	\$75.00	\$80.00
Record Search		
Less than 10 records	\$0.00	\$0.00
10-19 records	\$10.00	\$10.00
20-29 records	\$20.00	\$20.00
30-50 records	\$25.00	\$25.00
Care and Maintenance Fees		
Care and Maintenance – Riverside 25% of current Lot price		
Care and Maintenance –Regina 25% of current Lot price		

Western Canada Cemetery Fee Review

Cemetery License Fees	Regina Riverside	Regina Memorial Gardens	Calgary	Edmonton	Saskatoon Woodlawn	Lethbridge	Winnipeg	Prince Albert 2009	Swift Current
Standard	\$1,425	\$1195 - \$2480	\$2547 - \$2723	\$2253 - \$4802	\$1455 - \$1905	\$1,555	\$1765 - \$2660	\$1,700	\$957
Standard - Strip Foundation	\$1,875					\$1,760			
Option Area - Strip Foundation	\$2,055		\$3,162						
Child	\$645	\$340 - \$535	\$703	\$1065 - \$2194	\$450	\$480	\$620	\$850	\$409
Infant	\$230				\$140		\$260	\$340	
Field of Honour - Standard	\$715		\$1,274	50% of fee	\$1,475	\$850	\$1,300	\$1,255	
Field of Honour - Cremation	\$715		\$878	50% of fee		\$580			
Single Cremation Plot	\$535			\$1185 - \$1239		\$740		\$850	
Cremation Plot	\$1,685	\$895 - \$1160	\$1757 - \$2460	\$1239 - \$1681	\$940 - \$1075	\$1,195	\$1030 - \$1650		\$516
Indoor Columbarium	\$3095- \$3370	\$3050 - \$9085	\$3689 - \$24137	\$3100 - \$8000					
Outdoor Columbarium	\$2010- \$4015	\$3050 - \$9085	\$3514 - \$5318	\$3431- \$6802	\$2475 - \$2790	\$2055 - \$3245	\$2745 - \$3755	\$2,385	\$1475 - \$2508
Interments									
Standard	\$985	\$915	\$1,570	\$933	\$1,155	\$900	\$980	\$960	\$925
Child	\$500	\$365	\$630 - \$867	\$410	\$440	\$425	\$400	\$560	\$533
Infant	\$215		\$243		\$105		\$265	\$285	
Cremation	\$315	\$450	\$445	\$374	\$500	\$425	\$415	\$285	\$541
Cremation Surcharge	\$150		\$100	\$113	\$185	\$290	\$207		
Niche	\$150	\$355	\$445	Included	\$220	\$135	\$305	Included	\$144
Niche Surcharge	\$80				\$110	\$100			
Ossuary	\$150		\$180			\$100	\$230		
Scattering	\$150		\$125				\$230		
Urn placed in casket	\$80				\$220		\$150		
Memorialization									
Application Fee	\$125	\$150 - \$300	\$150	\$75		\$65	\$100	\$110	\$60
Foundation Installation	\$325	\$131 per sq ft	\$431	\$345 - \$1569	\$340 - \$635		\$375 - \$700		
Flat Marker Installation	\$190 - \$260	\$1 per sq in	\$325		\$195 - \$245		\$200		
Remove Foundation	\$180		\$412	\$142	\$180				
Remove Flat Marker	\$180		\$321	\$142	\$125 - \$250		\$110		
Bronze Wall Plaque	\$425								
Other Fees									
Late Fee	\$295		\$176 per 1/2 hr		\$130 per 1/2 hr	\$300 per hr	\$165 per 1/2 hr	\$130 per 1/2 hr	
Traditional Supplemental	\$550	\$280	\$1,107	\$329	\$510 - \$710	\$960	\$835	\$500	\$439
Cremation Supplemental	\$295	\$280	\$288	\$106	\$280 - \$400	\$480	\$245 - \$290	\$500	\$137

2015 Rates