

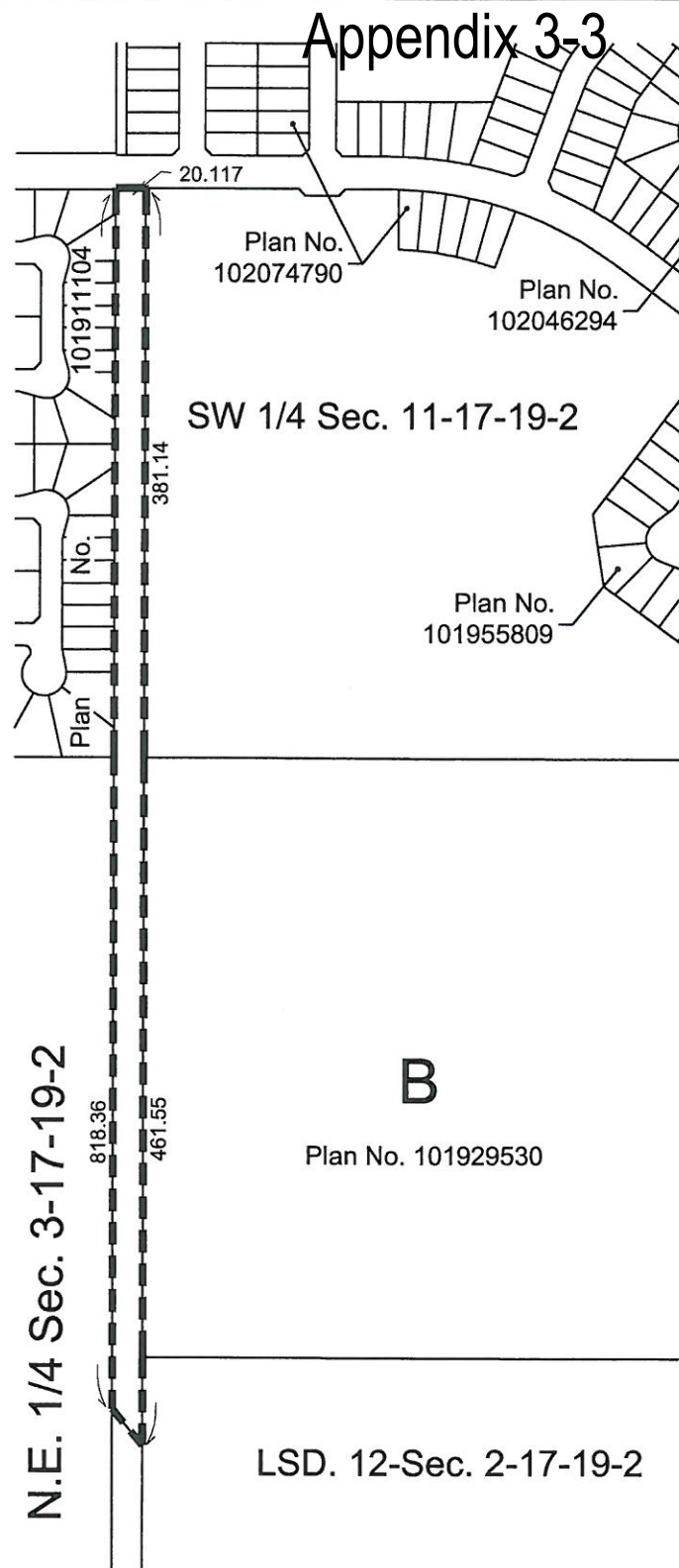
Plan Showing
PROPOSED
ROAD CLOSURE
of the Road Allowance
West of LSD 12 Sec.2 and
the Road Allowance
West of S.W.1/4 Sec.11
and the Road Allowance
West of Parcel B,
Plan No. 101929530
Twp.17 Rge.19 W.2 Mer.
Regina, Saskatchewan
2012
Scale 1:5000

Notes

Measurements are in metres and decimals thereof.
Area to be approved is outlined with a heavy dashed line and contains approximately 1.67 hectares.
Dimensions are approximate and are subject to changes up to $\pm 15\text{m}$ at the time of legal survey.

Dated at Regina in the
Province of Saskatchewan
This 21st day of June, 2012.


Guy Craig, S.L.S.
Saskatchewan Land Surveyor



FOCUS REGISTERED
LAND
SURVEYORS
FOCUS CORPORATION
DWG. NO. 010036190-SDTN02-R01