

PROPOSED SUBDIVISION and SURFACE CONSOLIDATION
of Block 81-86, 106-120, 137-144, 76A-80A,
Plan AX4852, Plan 101606071, Plan
101606082, Plan 101606093, Plan
101606105

City of Regina, Saskatchewan

Scott Assié, MCIP, RPP

2013

Scale 1:5000

Job No.: 170384

Initials: JP - SA

Preliminary Survey: N/A

File: 170384PR (2)


Altus Geomatics
 Limited Partnership

Toll Free: 1-800-465-6233
 www.altusgeomatics.com

CITY OF REGINA APPROVAL

The subdivision proposed herein outlined in bold dashed line is approved under the provisions of Bylaw No. 7748 of The City of Regina. Dated this ___ day of _____ A.D. 20__.

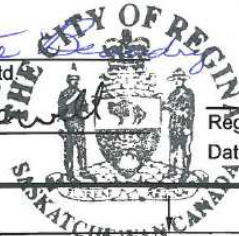
CITY CLERK

Measurements are in metres and decimals thereof.
 Measurements are approximate and may vary by ± 10 m.
 Area to be approved is outlined in bold dashed line and contains 57.17 ha (141.28 acs).

OWNER(S):

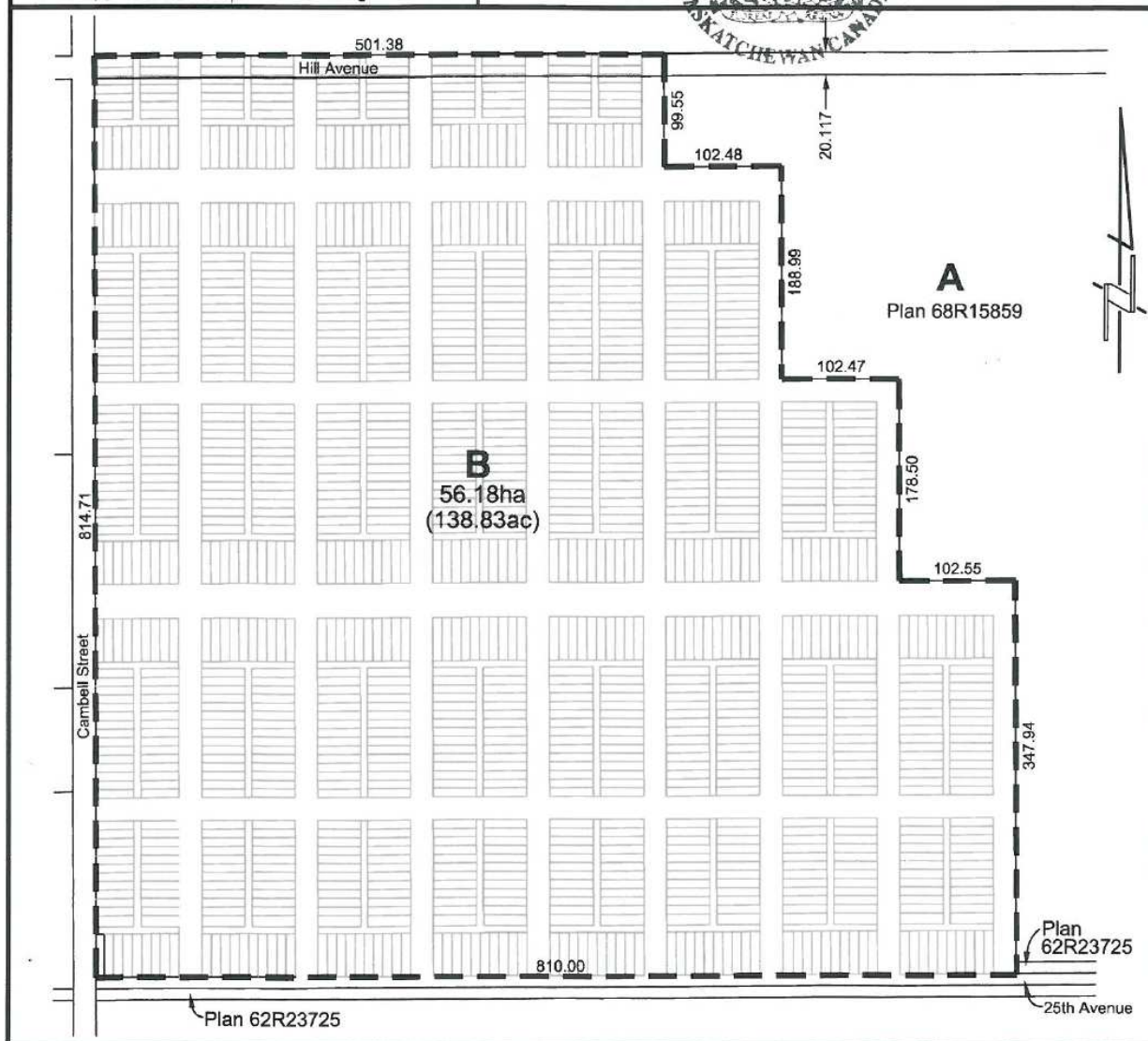
Janette
 Beaucorp Ventures Ltd.

Shelley
 City of Regina



Registered Professional Planner

Date: December 27th, 2013.



Project **14-CL-05**

Planning Department
 Civic Address/Subdivision

Block 81-86, 106-120, 137-144,
 76A-80A, Plan AX4852