

PLAN SHOWING

PROPOSED DESCRIPTIVE PLAN - TYPE II SHOWING SURFACE CONSOLIDATION OF

LOTS 21 TO 23, BLOCK 288, REG'D PLAN NO. OLD33,
LOT A, BLOCK 288, PLAN NO. 101891695,
LOT A, BLOCK 289, REG'D PLAN NO. 90R36844,
BLOCK 289, PLAN NO. 101160391
AND

ST/L 577, REG'D PLAN NO. OLD33.

NE 1/4 SEC 19, TWP 17, RGE 19, W2 Mer
REGINA, SASKATCHEWAN

BY: K.L. WAY, SLS

DATE: NOVEMBER, 2019

SCALE: 1:1000

LANDOWNER



CITY OF REGINA

NOTES

* MEASUREMENTS ARE IN METRES AND DECIMALS THEREOF.
- PORTION TO BE APPROVED IS OUTLINED WITH A BOLD
DASHED LINE AND CONTAINS 2.34 (6.35 sq) OF WHICH
A PORTION OF OSLER STREET = 0.31 ha (0.78 ac)

CITY OF REGINA APPROVAL

THE SUBMISSION PROPOSED HEREIN OUTLINED IN A BOLD
DASHED LINE IS APPROVED UNDER THE PROVISIONS OF BY-LAW
NO. 7748-L-884 OF THE CITY OF REGINA.

DATED THIS _____ DAY OF _____ A.D. 20____

CITY CLERK

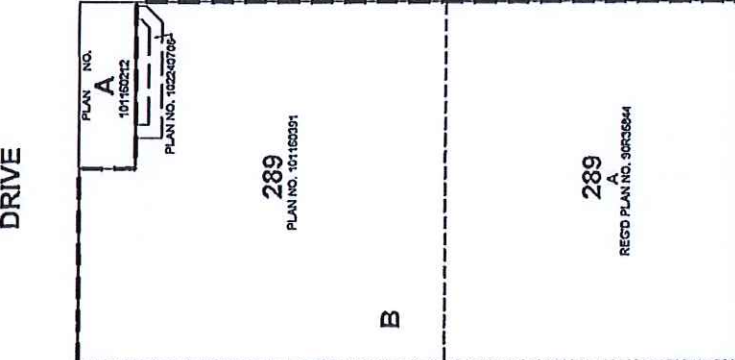
SURVEYORS CERTIFICATION

November 19, 2019
Date

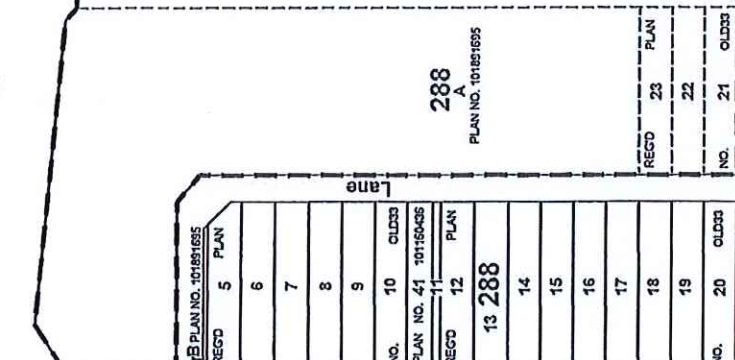
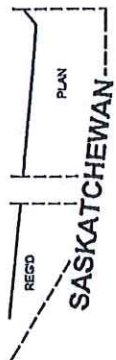
Kenneth J. Way
Saskatchewan Land Surveyor



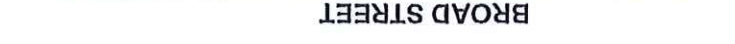
NO.	DATE	REVISION / ISSUED	JOB NO.	PAGE 1 OF 1
0	Nov 19, 2019	Plan Issued	10207030	0
MIDWEST SURVEY'S INC.				REVISION
405 MAXWELL CRESCENT				NO.
REGINA, SASK. S4S 0K				DATE
TEL: 306-525-6795				DRAWN BY: JLS



REGD	PLAN	40	PLAN	40	PLAN
NO.	NO.	303	NO.	NO.	302
10207030	10207030	39	10207030	39	OLD33



REGD	PLAN	40	PLAN	40	PLAN
NO.	NO.	303	NO.	NO.	302
10207030	10207030	39	10207030	39	OLD33



REGD	PLAN	40	PLAN	40	PLAN
NO.	NO.	303	NO.	NO.	302
10207030	10207030	39	10207030	39	OLD33