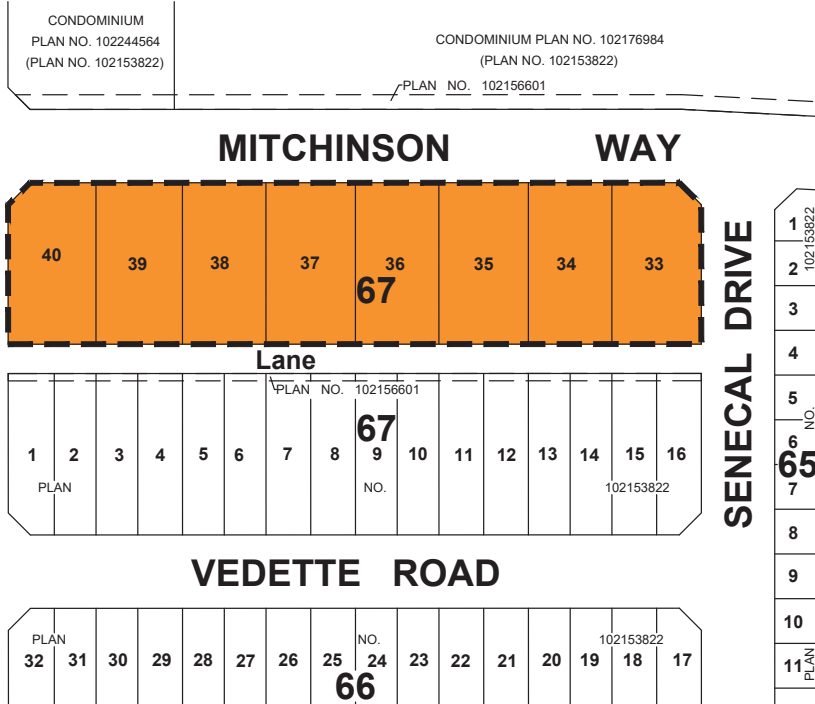


102153822
10
9
8
7
6
68A
5
4
3
2
1
PLAN 15
68
14

DELHAYE WAY



PLAN SHOWING

PLAN OF PROPOSED SUBDIVISION
OF ALL OF
LOTS 17 TO 32, BLOCK 67, PLAN No. 102153822
NW1/4 SEC 2, TWP 17, RGE20, W2 Mer
REGINA, SASKATCHEWAN
2019

SCALE = 1: 1000

NOTES

- PORTION TO BE APPROVED IS OUTLINED WITH A BOLD DASHED LINE

ZONING

RESIDENTIAL 5 (R5).



MIDWEST SURVEYS INC.
405 MAXWELL CRESCENT
REGINA, SK
S4N 5X9
TEL: 306-522-3601

S:\2019\RC-0113-19\CADD\RC-0113-19-J1-PPS-1_Rev0

No.	DATE	REVISION / ISSUED	JOB No.	PAGE 1 OF 1
0	May 22, 2019	Plan Issued	RC-0113-19	0 REVISION
SURVEYED BY: N/A		CALCD BY: SR	DRAWN BY: DJS	RC-0113-19-J1-PPS