

NOTES:
 - MEASUREMENTS ARE IN METRES AND DECIMALS THEREOF.
 - SOME MEASUREMENTS ARE APPROXIMATE AND MAY DIFFER FROM THE FINAL PLAN OF SURVEY BY AS MUCH AS 1.0 METRE.
 - PORTION TO BE APPROVED IS OUTLINED WITH A BOLD DASHED LINE AND CONTAINS 2.20 ha (5.44 ac)
 - TYPICAL CORNER CUTOFFS ARE 4.5 METRES.



CITY OF REGINA APPROVAL
 THE SUBDIVISION PROPOSED HEREIN OUTLINED IN A BOLD DASHED LINE IS APPROVED UNDER THE PROVISIONS OF BYLAW NO. 7748-LA-B84 OF THE CITY OF REGINA.

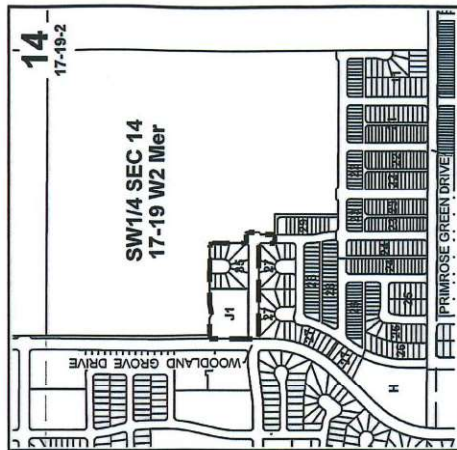
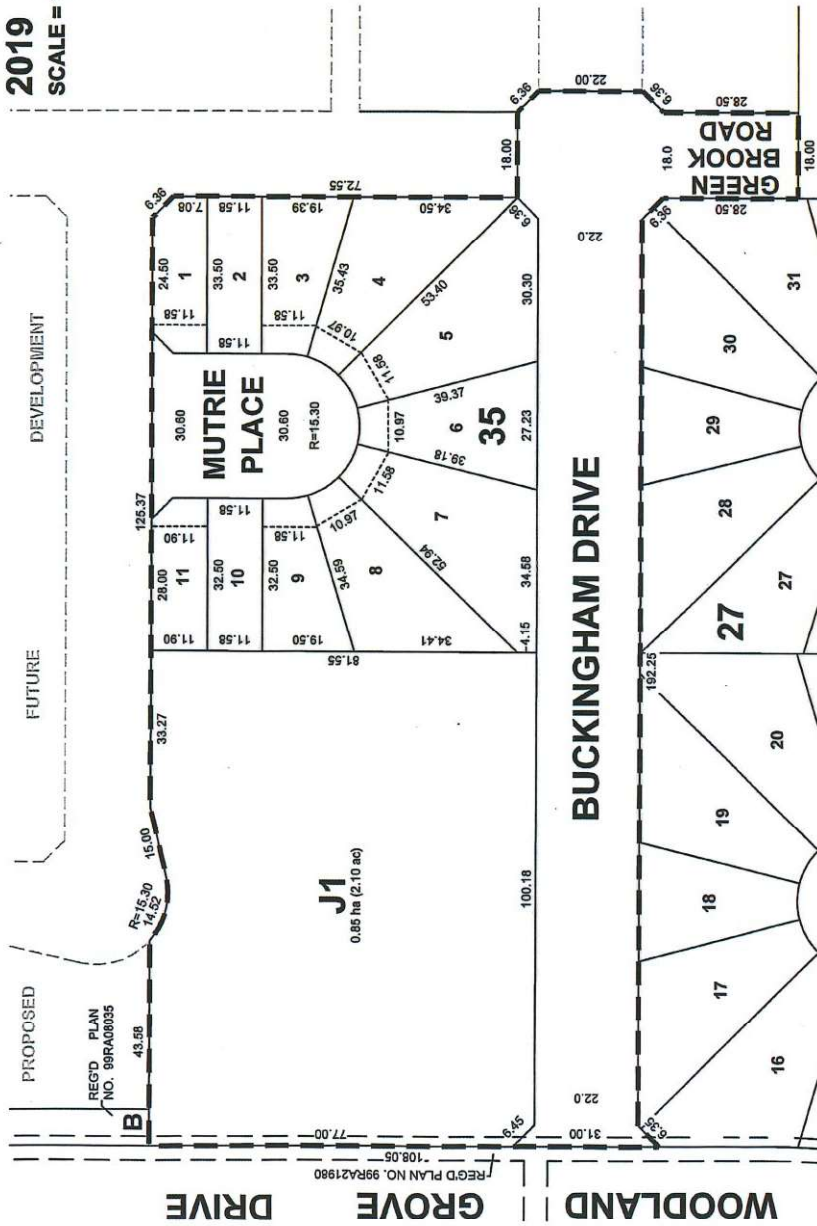
DATED THIS _____ DAY OF _____ A.D. 20____

JAN 28 / 2019
 DATE

S. Rajakumar
 SURESH KUMAR RAJAKUMAR
 SASKATCHEWAN LAND SURVEYOR

CITY CLERK

**THE TOWNS - PHASE 1 STAGE 1FA
 PLAN OF PROPOSED SUBDIVISION
 OF PART OF
 PARCEL B, REG'D PLAN NO. 99RA08035
 AND PART OF
 SW1/4 SEC 14, TWP 17, RGE 19, W2 Mer
 REGINA, SASKATCHEWAN
 2019
 SCALE = 1:1000**



KEY PLAN

OWNER:

CITY OF REGINA

