

**THE TOWNS - PHASE 1 STAGE 1GA  
 PLAN OF PROPOSED SUBDIVISION  
 OF PART OF  
 SW1/4 SEC 14, TWP 17, RGE 19, W2 Mer  
 REGINA, SASKATCHEWAN  
 2017  
 SCALE = 1:1000**

- NOTES:**  
 - MEASUREMENTS ARE IN METRES AND DECIMALS THEREOF.  
 - SOME MEASUREMENTS ARE APPROXIMATE AND MAY DIFFER FROM THE FINAL PLAN OF SURVEY BY AS MUCH AS 1.0 %.  
 - PORTION TO BE APPROVED IS OUTLINED WITH A BOLD DASHED LINE AND CONTAINS 0.58 ha (1.44 ac)  
 - TYPICAL CORNER CUTOFFS ARE 4.5 METRES.  
 - LOT WIDTHS SHOWN AS 12.19 ARE AT 6 METRE SETBACKS.

DATE DEC 12 / 2017  
 S. Reyshun  
 SURESHKUMAR RAJAKUMAR  
 SASKATCHEWAN LAND SURVEYOR



**KEY PLAN**

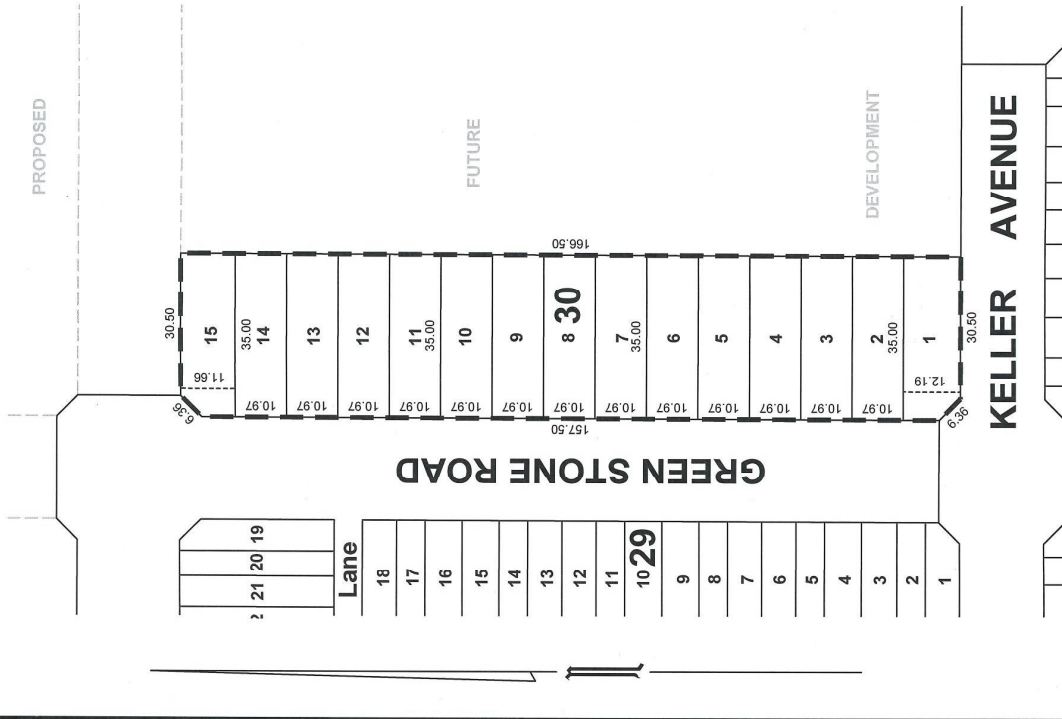
OWNER: \_\_\_\_\_

CITY OF REGINA

**CITY OF REGINA APPROVAL**  
 THE SUBDIVISION PROPOSED HEREIN OUTLINED IN A BOLD DASHED LINE IS APPROVED UNDER THE PROVISIONS OF BYLAW NO. 7748-LA-B84 OF THE CITY OF REGINA.

DATED THIS \_\_\_\_\_ DAY OF \_\_\_\_\_ A.D. 20\_\_.

CITY CLERK \_\_\_\_\_



**KELLER AVENUE**

