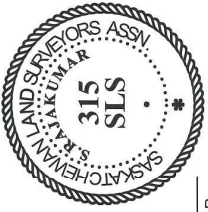


# APPENDIX E

## THE TOWNS - PHASE 1 STAGE 1F PLAN OF PROPOSED SUBDIVISION OF PART OF PARCEL B, REG'D PLAN NO. 99RA08035 AND PART OF SW1/4 SEC 14, TWP 17, RGE 19, W2 Mer REGINA, SASKATCHEWAN 2017 SCALE = 1:1000

**NOTES:**  
 - MEASUREMENTS ARE IN METRES AND DECIMALS THEREOF.  
 - SOME MEASUREMENTS ARE APPROXIMATE AND MAY DIFFER FROM THE FINAL PLAN OF SURVEY BY AS MUCH AS 1.0%.  
 - PORTION TO BE APPROVED IS OUTLINED WITH A BOLD DASHED LINE AND CONTAINS 1.56 ha (3.88 ac).  
 - TYPICAL CORNER CUTOFFS ARE 4.5 METRES.  
 - LOT WIDTHS SHOWN AS 2.50 ARE AT 6 METRE SETBACKS.



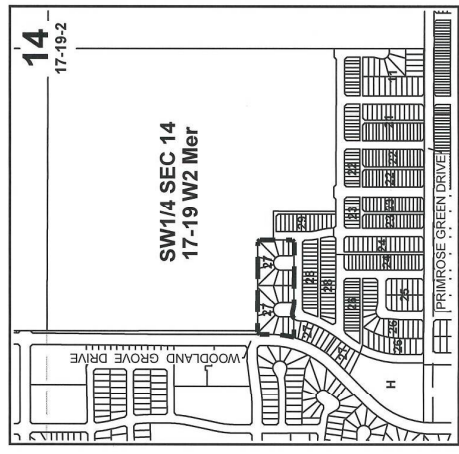
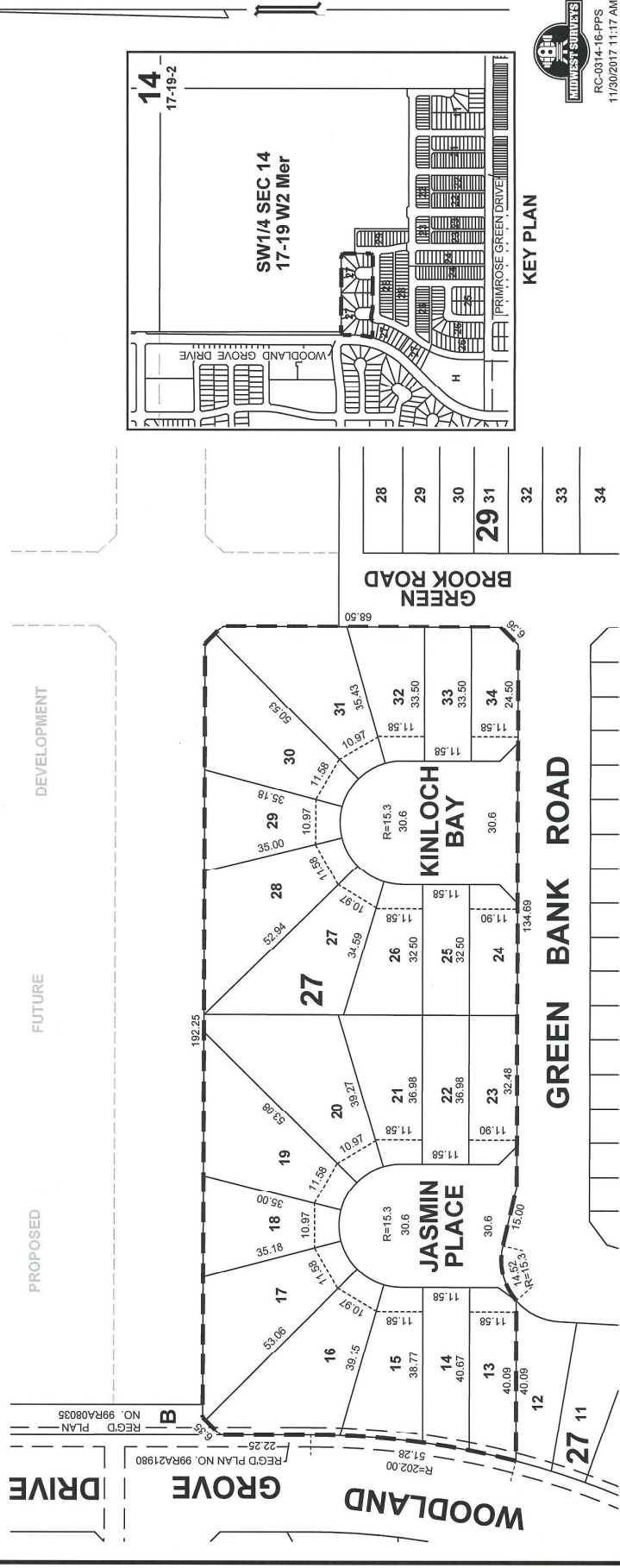
*S. Rajakumar*  
 SURESH KUMAR RAJAKUMAR  
 SASKATCHEWAN LAND SURVEYOR

DATE: Mar-30-2017  
 CITY CLERK: \_\_\_\_\_

OWNER: \_\_\_\_\_

CITY OF REGINA

CITY OF REGINA APPROVAL  
 THE SUBDIVISION PROPOSED HEREIN OUTLINED IN A BOLD DASHED LINE IS APPROVED UNDER THE PROVISIONS OF BYLAW NO. 7748-LA-B84 OF THE CITY OF REGINA.  
 DATED THIS \_\_\_\_\_ DAY OF \_\_\_\_\_ A.D. 20\_\_\_\_.



KEY PLAN

