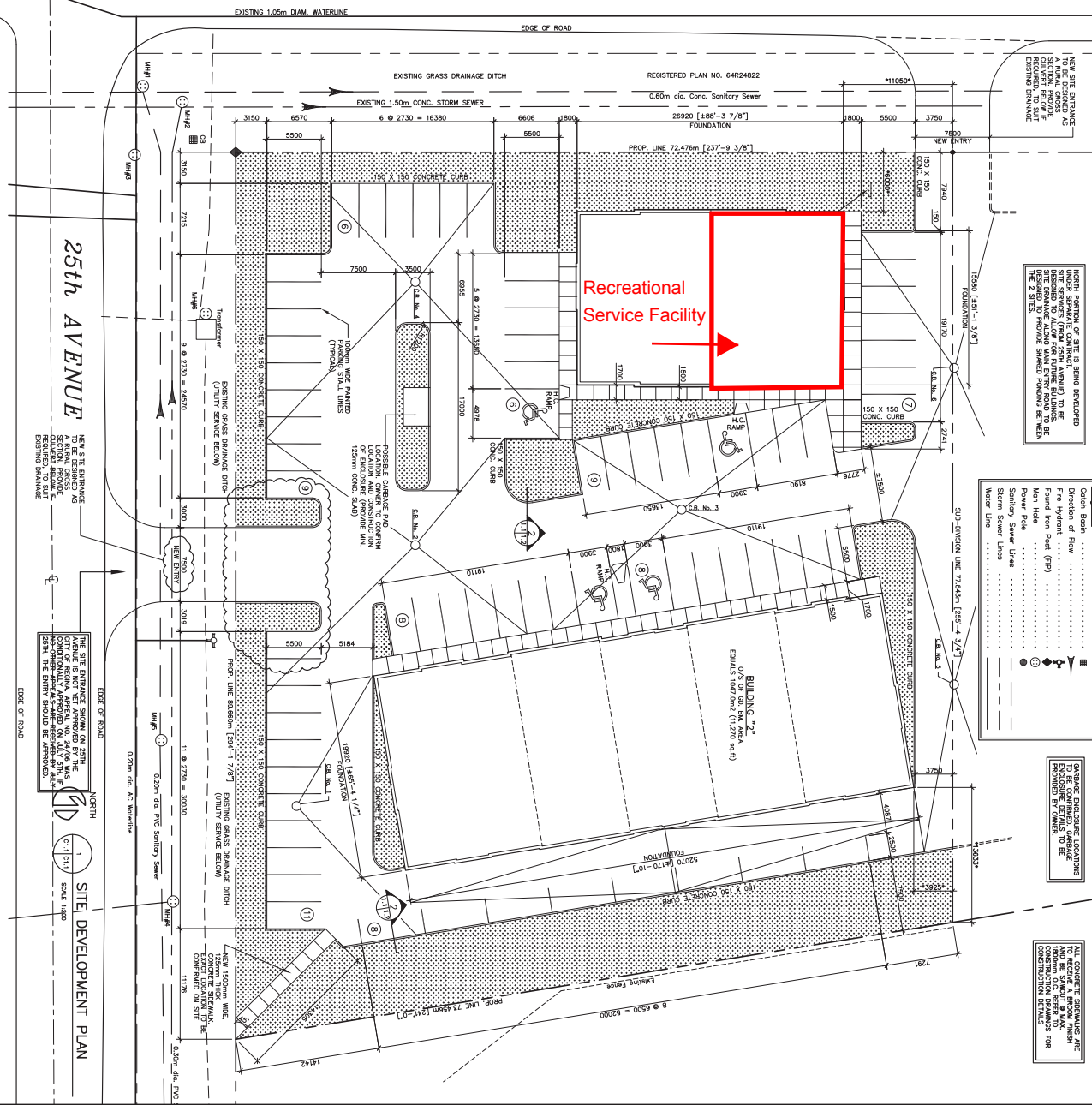


PASQUA STREET



NEW SITE ENTRANCE AS A BARRIERS SECTION BELOW THE 25th AVENUE. THE 25th AVENUE DRIVE SHOULD BE APPROVED.

THE NORTH PORTION OF SITE IS BEING DEVELOPED FOR RECREATIONAL SERVICES (FROM 25th AVENUE) TO BE PROVIDED ALONG WITH THE 25th AVENUE DRIVE. THE 25th AVENUE DRIVE SHOULD BE APPROVED.

**Legend:**

- Color Basin
- Direction of Flow
- Fire Hydrant
- Found from Post (FP)
- Main Hole
- Power Pole
- Storm Sewer
- Storm Sewer Lateral
- Water Line

CONCRETE FOUNDATION LOCATIONS DISCLOSED DETAILS TO BE DIVIDED BY 1/4 INCH.

ALL CONCRETE FOUNDATIONS MUST HAVE BE SET AT 1/4" MAX CONTRIBUTION REBAR FOR CONSTRUCTION DETAILS.

**SITE DATA**

LEGAL DESCRIPTION: PLOT 6, 7, 8, 9, 10, 11, 12, 13, 14, 15, 16, 17, 18, 19, 20, 21, 22, 23, 24, 25, 26, 27, 28, 29, 30, 31, 32, 33, 34, 35, 36, 37, 38, 39, 40, 41, 42, 43, 44, 45, 46, 47, 48, 49, 50, 51, 52, 53, 54, 55, 56, 57, 58, 59, 60, 61, 62, 63, 64, 65, 66, 67, 68, 69, 70, 71, 72, 73, 74, 75, 76, 77, 78, 79, 80, 81, 82, 83, 84, 85, 86, 87, 88, 89, 90, 91, 92, 93, 94, 95, 96, 97, 98, 99, 100, 101, 102, 103, 104, 105, 106, 107, 108, 109, 110, 111, 112, 113, 114, 115, 116, 117, 118, 119, 120, 121, 122, 123, 124, 125, 126, 127, 128, 129, 130, 131, 132, 133, 134, 135, 136, 137, 138, 139, 140, 141, 142, 143, 144, 145, 146, 147, 148, 149, 150, 151, 152, 153, 154, 155, 156, 157, 158, 159, 160, 161, 162, 163, 164, 165, 166, 167, 168, 169, 170, 171, 172, 173, 174, 175, 176, 177, 178, 179, 180, 181, 182, 183, 184, 185, 186, 187, 188, 189, 190, 191, 192, 193, 194, 195, 196, 197, 198, 199, 200, 201, 202, 203, 204, 205, 206, 207, 208, 209, 210, 211, 212, 213, 214, 215, 216, 217, 218, 219, 220, 221, 222, 223, 224, 225, 226, 227, 228, 229, 230, 231, 232, 233, 234, 235, 236, 237, 238, 239, 240, 241, 242, 243, 244, 245, 246, 247, 248, 249, 250, 251, 252, 253, 254, 255, 256, 257, 258, 259, 260, 261, 262, 263, 264, 265, 266, 267, 268, 269, 270, 271, 272, 273, 274, 275, 276, 277, 278, 279, 280, 281, 282, 283, 284, 285, 286, 287, 288, 289, 290, 291, 292, 293, 294, 295, 296, 297, 298, 299, 300, 301, 302, 303, 304, 305, 306, 307, 308, 309, 310, 311, 312, 313, 314, 315, 316, 317, 318, 319, 320, 321, 322, 323, 324, 325, 326, 327, 328, 329, 330, 331, 332, 333, 334, 335, 336, 337, 338, 339, 340, 341, 342, 343, 344, 345, 346, 347, 348, 349, 350, 351, 352, 353, 354, 355, 356, 357, 358, 359, 360, 361, 362, 363, 364, 365, 366, 367, 368, 369, 370, 371, 372, 373, 374, 375, 376, 377, 378, 379, 380, 381, 382, 383, 384, 385, 386, 387, 388, 389, 390, 391, 392, 393, 394, 395, 396, 397, 398, 399, 400, 401, 402, 403, 404, 405, 406, 407, 408, 409, 410, 411, 412, 413, 414, 415, 416, 417, 418, 419, 420, 421, 422, 423, 424, 425, 426, 427, 428, 429, 430, 431, 432, 433, 434, 435, 436, 437, 438, 439, 440, 441, 442, 443, 444, 445, 446, 447, 448, 449, 450, 451, 452, 453, 454, 455, 456, 457, 458, 459, 460, 461, 462, 463, 464, 465, 466, 467, 468, 469, 470, 471, 472, 473, 474, 475, 476, 477, 478, 479, 480, 481, 482, 483, 484, 485, 486, 487, 488, 489, 490, 491, 492, 493, 494, 495, 496, 497, 498, 499, 500, 501, 502, 503, 504, 505, 506, 507, 508, 509, 510, 511, 512, 513, 514, 515, 516, 517, 518, 519, 520, 521, 522, 523, 524, 525, 526, 527, 528, 529, 530, 531, 532, 533, 534, 535, 536, 537, 538, 539, 540, 541, 542, 543, 544, 545, 546, 547, 548, 549, 550, 551, 552, 553, 554, 555, 556, 557, 558, 559, 560, 561, 562, 563, 564, 565, 566, 567, 568, 569, 570, 571, 572, 573, 574, 575, 576, 577, 578, 579, 580, 581, 582, 583, 584, 585, 586, 587, 588, 589, 590, 591, 592, 593, 594, 595, 596, 597, 598, 599, 600, 601, 602, 603, 604, 605, 606, 607, 608, 609, 610, 611, 612, 613, 614, 615, 616, 617, 618, 619, 620, 621, 622, 623, 624, 625, 626, 627, 628, 629, 630, 631, 632, 633, 634, 635, 636, 637, 638, 639, 640, 641, 642, 643, 644, 645, 646, 647, 648, 649, 650, 651, 652, 653, 654, 655, 656, 657, 658, 659, 660, 661, 662, 663, 664, 665, 666, 667, 668, 669, 670, 671, 672, 673, 674, 675, 676, 677, 678, 679, 680, 681, 682, 683, 684, 685, 686, 687, 688, 689, 690, 691, 692, 693, 694, 695, 696, 697, 698, 699, 700, 701, 702, 703, 704, 705, 706, 707, 708, 709, 710, 711, 712, 713, 714, 715, 716, 717, 718, 719, 720, 721, 722, 723, 724, 725, 726, 727, 728, 729, 730, 731, 732, 733, 734, 735, 736, 737, 738, 739, 740, 741, 742, 743, 744, 745, 746, 747, 748, 749, 750, 751, 752, 753, 754, 755, 756, 757, 758, 759, 760, 761, 762, 763, 764, 765, 766, 767, 768, 769, 770, 771, 772, 773, 774, 775, 776, 777, 778, 779, 780, 781, 782, 783, 784, 785, 786, 787, 788, 789, 790, 791, 792, 793, 794, 795, 796, 797, 798, 799, 800, 801, 802, 803, 804, 805, 806, 807, 808, 809, 810, 811, 812, 813, 814, 815, 816, 817, 818, 819, 820, 821, 822, 823, 824, 825, 826, 827, 828, 829, 830, 831, 832, 833, 834, 835, 836, 837, 838, 839, 840, 841, 842, 843, 844, 845, 846, 847, 848, 849, 850, 851, 852, 853, 854, 855, 856, 857, 858, 859, 860, 861, 862, 863, 864, 865, 866, 867, 868, 869, 870, 871, 872, 873, 874, 875, 876, 877, 878, 879, 880, 881, 882, 883, 884, 885, 886, 887, 888, 889, 890, 891, 892, 893, 894, 895, 896, 897, 898, 899, 900, 901, 902, 903, 904, 905, 906, 907, 908, 909, 910, 911, 912, 913, 914, 915, 916, 917, 918, 919, 920, 921, 922, 923, 924, 925, 926, 927, 928, 929, 930, 931, 932, 933, 934, 935, 936, 937, 938, 939, 940, 941, 942, 943, 944, 945, 946, 947, 948, 949, 950, 951, 952, 953, 954, 955, 956, 957, 958, 959, 960, 961, 962, 963, 964, 965, 966, 967, 968, 969, 970, 971, 972, 973, 974, 975, 976, 977, 978, 979, 980, 981, 982, 983, 984, 985, 986, 987, 988, 989, 990, 991, 992, 993, 994, 995, 996, 997, 998, 999, 1000.

**PARKING SUMMARY**

REQUIREMENT - 1 STALL/60m<sup>2</sup>

TOTAL AREA - 1526m<sup>2</sup>

1480/60 - 25 STALLS REQUIRED

40/60 - 18 STALLS PROVIDED

**LIST OF DRAWINGS**

CONSTRUCTION

- C-1 SITE PLAN GENERAL NOTES
- C-2 FOUNDATION PLAN, DETAILS
- C-3 ROOF PLAN, CONSTRUCTION NOTES
- C-4 FLOOR PLAN, CONSTRUCTION SCHEDULE
- C-5 EXTERIOR ELEVATIONS - BUILDING ONE
- C-6 INTERIOR ELEVATIONS - BUILDING TWO
- C-7 SECTION AND DETAILS

STRUCTURAL

- S-1 FOUNDATION PLAN - BUILDING ONE
- S-2 FOUNDATION PLAN - BUILDING TWO
- S-3 ROOF FRAMING PLAN - BUILDING ONE
- S-4 ROOF FRAMING PLAN - BUILDING TWO
- S-5 FLOOR ASSEMBLY - BUILDING ONE
- S-6 FLOOR ASSEMBLY - BUILDING TWO
- S-7 SECTION AND DETAILS

MECHANICAL

- M-1 MECHANICAL SCHEDULES
- M-2 MECHANICAL SCHEDULES
- M-3 MECHANICAL SCHEDULES
- M-4 MECHANICAL SCHEDULES
- M-5 MECHANICAL SCHEDULES
- M-6 MECHANICAL SCHEDULES
- M-7 MECHANICAL SCHEDULES
- M-8 MECHANICAL SCHEDULES
- M-9 MECHANICAL SCHEDULES
- M-10 MECHANICAL SCHEDULES

ELECTRICAL

- E-1 ELECTRICAL SITE PLAN, DETAILS
- E-2 ELECTRICAL FLOOR PLAN, SCHEDULES
- E-3 ELECTRICAL FLOOR PLAN, SCHEDULES
- E-4 ELECTRICAL FLOOR PLAN, SCHEDULES
- E-5 ELECTRICAL FLOOR PLAN, SCHEDULES

**CODE REVIEW (NBC 1995)**

**BUILDING AREA**

- 1 - 478m<sup>2</sup>
- 2 - 478m<sup>2</sup>
- 3 - 478m<sup>2</sup>
- 4 - 478m<sup>2</sup>
- 5 - 478m<sup>2</sup>
- 6 - 478m<sup>2</sup>
- 7 - 478m<sup>2</sup>
- 8 - 478m<sup>2</sup>
- 9 - 478m<sup>2</sup>
- 10 - 478m<sup>2</sup>
- 11 - 478m<sup>2</sup>
- 12 - 478m<sup>2</sup>
- 13 - 478m<sup>2</sup>
- 14 - 478m<sup>2</sup>
- 15 - 478m<sup>2</sup>
- 16 - 478m<sup>2</sup>
- 17 - 478m<sup>2</sup>
- 18 - 478m<sup>2</sup>
- 19 - 478m<sup>2</sup>
- 20 - 478m<sup>2</sup>
- 21 - 478m<sup>2</sup>
- 22 - 478m<sup>2</sup>
- 23 - 478m<sup>2</sup>
- 24 - 478m<sup>2</sup>
- 25 - 478m<sup>2</sup>
- 26 - 478m<sup>2</sup>
- 27 - 478m<sup>2</sup>
- 28 - 478m<sup>2</sup>
- 29 - 478m<sup>2</sup>
- 30 - 478m<sup>2</sup>
- 31 - 478m<sup>2</sup>
- 32 - 478m<sup>2</sup>
- 33 - 478m<sup>2</sup>
- 34 - 478m<sup>2</sup>
- 35 - 478m<sup>2</sup>
- 36 - 478m<sup>2</sup>
- 37 - 478m<sup>2</sup>
- 38 - 478m<sup>2</sup>
- 39 - 478m<sup>2</sup>
- 40 - 478m<sup>2</sup>
- 41 - 478m<sup>2</sup>
- 42 - 478m<sup>2</sup>
- 43 - 478m<sup>2</sup>
- 44 - 478m<sup>2</sup>
- 45 - 478m<sup>2</sup>
- 46 - 478m<sup>2</sup>
- 47 - 478m<sup>2</sup>
- 48 - 478m<sup>2</sup>
- 49 - 478m<sup>2</sup>
- 50 - 478m<sup>2</sup>
- 51 - 478m<sup>2</sup>
- 52 - 478m<sup>2</sup>
- 53 - 478m<sup>2</sup>
- 54 - 478m<sup>2</sup>
- 55 - 478m<sup>2</sup>
- 56 - 478m<sup>2</sup>
- 57 - 478m<sup>2</sup>
- 58 - 478m<sup>2</sup>
- 59 - 478m<sup>2</sup>
- 60 - 478m<sup>2</sup>
- 61 - 478m<sup>2</sup>
- 62 - 478m<sup>2</sup>
- 63 - 478m<sup>2</sup>
- 64 - 478m<sup>2</sup>
- 65 - 478m<sup>2</sup>
- 66 - 478m<sup>2</sup>
- 67 - 478m<sup>2</sup>
- 68 - 478m<sup>2</sup>
- 69 - 478m<sup>2</sup>
- 70 - 478m<sup>2</sup>
- 71 - 478m<sup>2</sup>
- 72 - 478m<sup>2</sup>
- 73 - 478m<sup>2</sup>
- 74 - 478m<sup>2</sup>
- 75 - 478m<sup>2</sup>
- 76 - 478m<sup>2</sup>
- 77 - 478m<sup>2</sup>
- 78 - 478m<sup>2</sup>
- 79 - 478m<sup>2</sup>
- 80 - 478m<sup>2</sup>
- 81 - 478m<sup>2</sup>
- 82 - 478m<sup>2</sup>
- 83 - 478m<sup>2</sup>
- 84 - 478m<sup>2</sup>
- 85 - 478m<sup>2</sup>
- 86 - 478m<sup>2</sup>
- 87 - 478m<sup>2</sup>
- 88 - 478m<sup>2</sup>
- 89 - 478m<sup>2</sup>
- 90 - 478m<sup>2</sup>
- 91 - 478m<sup>2</sup>
- 92 - 478m<sup>2</sup>
- 93 - 478m<sup>2</sup>
- 94 - 478m<sup>2</sup>
- 95 - 478m<sup>2</sup>
- 96 - 478m<sup>2</sup>
- 97 - 478m<sup>2</sup>
- 98 - 478m<sup>2</sup>
- 99 - 478m<sup>2</sup>
- 100 - 478m<sup>2</sup>

**ALLOWABLE AREA**

- 1 - 478m<sup>2</sup>
- 2 - 478m<sup>2</sup>
- 3 - 478m<sup>2</sup>
- 4 - 478m<sup>2</sup>
- 5 - 478m<sup>2</sup>
- 6 - 478m<sup>2</sup>
- 7 - 478m<sup>2</sup>
- 8 - 478m<sup>2</sup>
- 9 - 478m<sup>2</sup>
- 10 - 478m<sup>2</sup>
- 11 - 478m<sup>2</sup>
- 12 - 478m<sup>2</sup>
- 13 - 478m<sup>2</sup>
- 14 - 478m<sup>2</sup>
- 15 - 478m<sup>2</sup>
- 16 - 478m<sup>2</sup>
- 17 - 478m<sup>2</sup>
- 18 - 478m<sup>2</sup>
- 19 - 478m<sup>2</sup>
- 20 - 478m<sup>2</sup>
- 21 - 478m<sup>2</sup>
- 22 - 478m<sup>2</sup>
- 23 - 478m<sup>2</sup>
- 24 - 478m<sup>2</sup>
- 25 - 478m<sup>2</sup>
- 26 - 478m<sup>2</sup>
- 27 - 478m<sup>2</sup>
- 28 - 478m<sup>2</sup>
- 29 - 478m<sup>2</sup>
- 30 - 478m<sup>2</sup>
- 31 - 478m<sup>2</sup>
- 32 - 478m<sup>2</sup>
- 33 - 478m<sup>2</sup>
- 34 - 478m<sup>2</sup>
- 35 - 478m<sup>2</sup>
- 36 - 478m<sup>2</sup>
- 37 - 478m<sup>2</sup>
- 38 - 478m<sup>2</sup>
- 39 - 478m<sup>2</sup>
- 40 - 478m<sup>2</sup>
- 41 - 478m<sup>2</sup>
- 42 - 478m<sup>2</sup>
- 43 - 478m<sup>2</sup>
- 44 - 478m<sup>2</sup>
- 45 - 478m<sup>2</sup>
- 46 - 478m<sup>2</sup>
- 47 - 478m<sup>2</sup>
- 48 - 478m<sup>2</sup>
- 49 - 478m<sup>2</sup>
- 50 - 478m<sup>2</sup>
- 51 - 478m<sup>2</sup>
- 52 - 478m<sup>2</sup>
- 53 - 478m<sup>2</sup>
- 54 - 478m<sup>2</sup>
- 55 - 478m<sup>2</sup>
- 56 - 478m<sup>2</sup>
- 57 - 478m<sup>2</sup>
- 58 - 478m<sup>2</sup>
- 59 - 478m<sup>2</sup>
- 60 - 478m<sup>2</sup>
- 61 - 478m<sup>2</sup>
- 62 - 478m<sup>2</sup>
- 63 - 478m<sup>2</sup>
- 64 - 478m<sup>2</sup>
- 65 - 478m<sup>2</sup>
- 66 - 478m<sup>2</sup>
- 67 - 478m<sup>2</sup>
- 68 - 478m<sup>2</sup>
- 69 - 478m<sup>2</sup>
- 70 - 478m<sup>2</sup>
- 71 - 478m<sup>2</sup>
- 72 - 478m<sup>2</sup>
- 73 - 478m<sup>2</sup>
- 74 - 478m<sup>2</sup>
- 75 - 478m<sup>2</sup>
- 76 - 478m<sup>2</sup>
- 77 - 478m<sup>2</sup>
- 78 - 478m<sup>2</sup>
- 79 - 478m<sup>2</sup>
- 80 - 478m<sup>2</sup>
- 81 - 478m<sup>2</sup>
- 82 - 478m<sup>2</sup>
- 83 - 478m<sup>2</sup>
- 84 - 478m<sup>2</sup>
- 85 - 478m<sup>2</sup>
- 86 - 478m<sup>2</sup>
- 87 - 478m<sup>2</sup>
- 88 - 478m<sup>2</sup>
- 89 - 478m<sup>2</sup>
- 90 - 478m<sup>2</sup>
- 91 - 478m<sup>2</sup>
- 92 - 478m<sup>2</sup>
- 93 - 478m<sup>2</sup>
- 94 - 478m<sup>2</sup>
- 95 - 478m<sup>2</sup>
- 96 - 478m<sup>2</sup>
- 97 - 478m<sup>2</sup>
- 98 - 478m<sup>2</sup>
- 99 - 478m<sup>2</sup>
- 100 - 478m<sup>2</sup>

**SEPARATION**

- 1 - 12m
- 2 - 12m
- 3 - 12m
- 4 - 12m
- 5 - 12m
- 6 - 12m
- 7 - 12m
- 8 - 12m
- 9 - 12m
- 10 - 12m
- 11 - 12m
- 12 - 12m
- 13 - 12m
- 14 - 12m
- 15 - 12m
- 16 - 12m
- 17 - 12m
- 18 - 12m
- 19 - 12m
- 20 - 12m
- 21 - 12m
- 22 - 12m
- 23 - 12m
- 24 - 12m
- 25 - 12m
- 26 - 12m
- 27 - 12m
- 28 - 12m
- 29 - 12m
- 30 - 12m
- 31 - 12m
- 32 - 12m
- 33 - 12m
- 34 - 12m
- 35 - 12m
- 36 - 12m
- 37 - 12m
- 38 - 12m
- 39 - 12m
- 40 - 12m
- 41 - 12m
- 42 - 12m
- 43 - 12m
- 44 - 12m
- 45 - 12m
- 46 - 12m
- 47 - 12m
- 48 - 12m
- 49 - 12m
- 50 - 12m
- 51 - 12m
- 52 - 12m
- 53 - 12m
- 54 - 12m
- 55 - 12m
- 56 - 12m
- 57 - 12m
- 58 - 12m
- 59 - 12m
- 60 - 12m
- 61 - 12m
- 62 - 12m
- 63 - 12m
- 64 - 12m
- 65 - 12m
- 66 - 12m
- 67 - 12m
- 68 - 12m
- 69 - 12m
- 70 - 12m
- 71 - 12m
- 72 - 12m
- 73 - 12m
- 74 - 12m
- 75 - 12m
- 76 - 12m
- 77 - 12m
- 78 - 12m
- 79 - 12m
- 80 - 12m
- 81 - 12m
- 82 - 12m
- 83 - 12m
- 84 - 12m
- 85 - 12m
- 86 - 12m
- 87 - 12m
- 88 - 12m
- 89 - 12m
- 90 - 12m
- 91 - 12m
- 92 - 12m
- 93 - 12m
- 94 - 12m
- 95 - 12m
- 96 - 12m
- 97 - 12m
- 98 - 12m
- 99 - 12m
- 100 - 12m

**WEST**

- 1 - NO REQUIREMENTS
- 2 - NO REQUIREMENTS
- 3 - NO REQUIREMENTS
- 4 - NO REQUIREMENTS
- 5 - NO REQUIREMENTS
- 6 - NO REQUIREMENTS
- 7 - NO REQUIREMENTS
- 8 - NO REQUIREMENTS
- 9 - NO REQUIREMENTS
- 10 - NO REQUIREMENTS
- 11 - NO REQUIREMENTS
- 12 - NO REQUIREMENTS
- 13 - NO REQUIREMENTS
- 14 - NO REQUIREMENTS
- 15 - NO REQUIREMENTS
- 16 - NO REQUIREMENTS
- 17 - NO REQUIREMENTS
- 18 - NO REQUIREMENTS
- 19 - NO REQUIREMENTS
- 20 - NO REQUIREMENTS
- 21 - NO REQUIREMENTS
- 22 - NO REQUIREMENTS
- 23 - NO REQUIREMENTS
- 24 - NO REQUIREMENTS
- 25 - NO REQUIREMENTS
- 26 - NO REQUIREMENTS
- 27 - NO REQUIREMENTS
- 28 - NO REQUIREMENTS
- 29 - NO REQUIREMENTS
- 30 - NO REQUIREMENTS
- 31 - NO REQUIREMENTS
- 32 - NO REQUIREMENTS
- 33 - NO REQUIREMENTS
- 34 - NO REQUIREMENTS
- 35 - NO REQUIREMENTS
- 36 - NO REQUIREMENTS
- 37 - NO REQUIREMENTS
- 38 - NO REQUIREMENTS
- 39 - NO REQUIREMENTS
- 40 - NO REQUIREMENTS
- 41 - NO REQUIREMENTS
- 42 - NO REQUIREMENTS
- 43 - NO REQUIREMENTS
- 44 - NO REQUIREMENTS
- 45 - NO REQUIREMENTS
- 46 - NO REQUIREMENTS
- 47 - NO REQUIREMENTS
- 48 - NO REQUIREMENTS
- 49 - NO REQUIREMENTS
- 50 - NO REQUIREMENTS
- 51 - NO REQUIREMENTS
- 52 - NO REQUIREMENTS
- 53 - NO REQUIREMENTS
- 54 - NO REQUIREMENTS
- 55 - NO REQUIREMENTS
- 56 - NO REQUIREMENTS
- 57 - NO REQUIREMENTS
- 58 - NO REQUIREMENTS
-