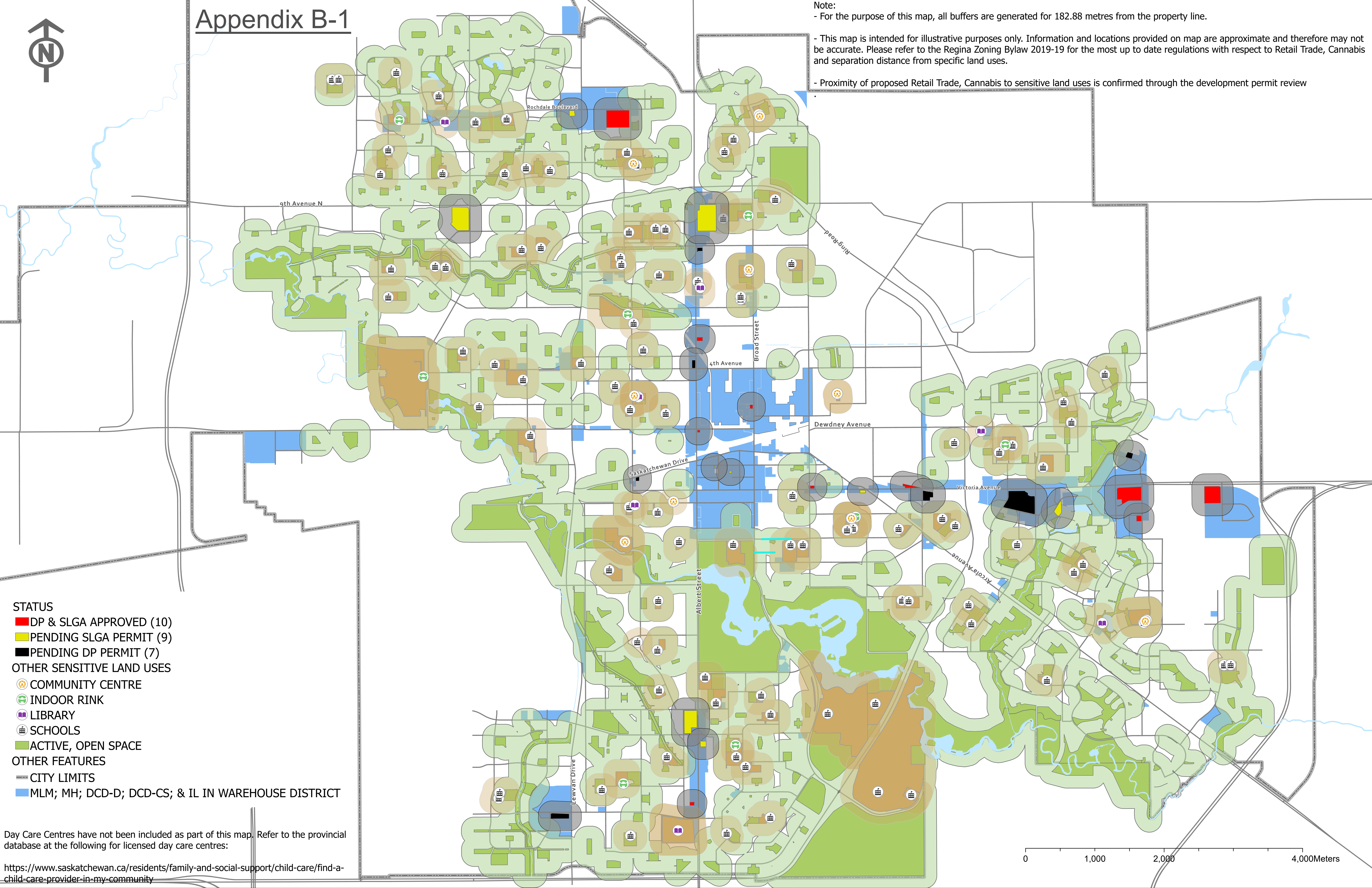




Appendix B-1

Note:  
- For the purpose of this map, all buffers are generated for 182.88 metres from the property line.  
  
- This map is intended for illustrative purposes only. Information and locations provided on map are approximate and therefore may not be accurate. Please refer to the Regina Zoning Bylaw 2019-19 for the most up to date regulations with respect to Retail Trade, Cannabis and separation distance from specific land uses.  
  
- Proximity of proposed Retail Trade, Cannabis to sensitive land uses is confirmed through the development permit review



Current Separation Distance For Cannabis Stores, 182.88 metres